

WESTWAY PLAZA

WICHITA, KS | SWC S. SENECA STREET AND W. PAWNEE AVENUE



- Active redevelopment of grocery-anchored shopping center
- Shop space and up to +/-33,000 SF box available
- Top ranking AutoZone [#2], Ace Hardware [#6], Starbucks [#3] and Domino's [#5] in Kansas [Placer.AI]
- The phased redevelopment will include new storefront parking and facades

DEMOGRAPHICS:

	1 MILE	3 MILE	5 MILE
2024 Population	13,821	78,509	182,958
2024 Daytime Population	10,235	95,075	243,094
2024 Total Households	5,704	32,302	75,822
2024 Average HH Income	\$60,678	\$60,309	\$64,101

TRAFFIC COUNTS:

S. Seneca St.: 21,125 VPD
W. Pawnee Ave.: 15,880 VPD

FOR MORE INFORMATION, PLEASE CONTACT:

RACHEL FORSLUND

Vice President | Brokerage
214.276.5279
rforslund@theretailconnection.net
TX LIC: 755724

JAKE BURNS

Senior Vice President | Brokerage
214.572.8425
jburns@theretailconnection.net
TX LIC: 636375

SCOTT REID

Managing Broker, Parasell, Inc
949.942.6585
scott@parasellinc.com
KS LIC: 00240521

POWER CENTER SIZE:
219,000 SF

AVAILABILITY:
+/-700 SF – 33,000 SF

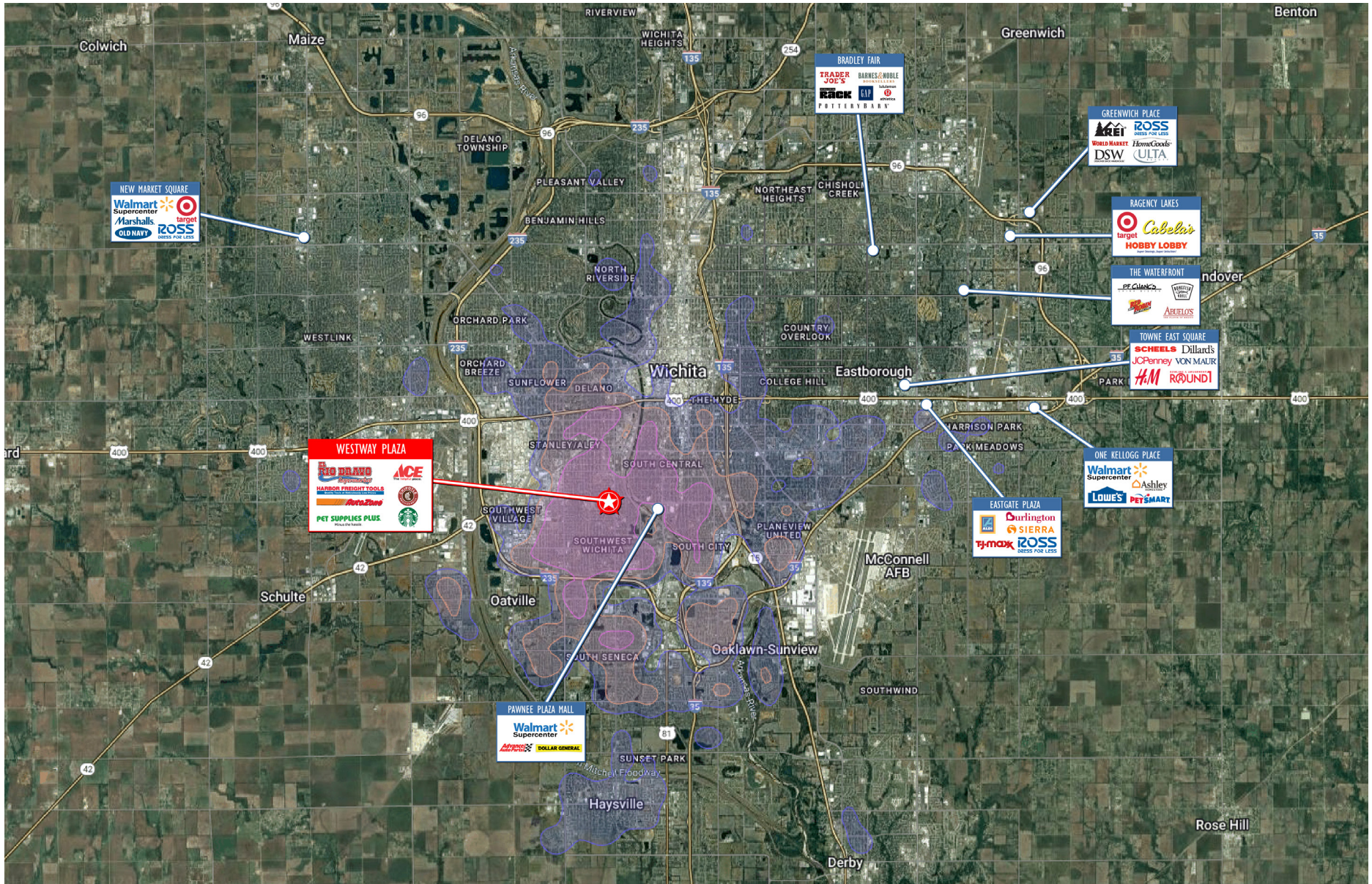
FOR LEASE:
PLEASE CALL FOR INFO.

AREA RETAILERS:



WESTWAY PLAZA

WICHITA, KS | SWC S. SENECA STREET AND W. PAWNEE AVENUE



THE **retail** CONNECTION

RACHEL FORSLUND
214.276.5279
rforlund@theretailconnection.net

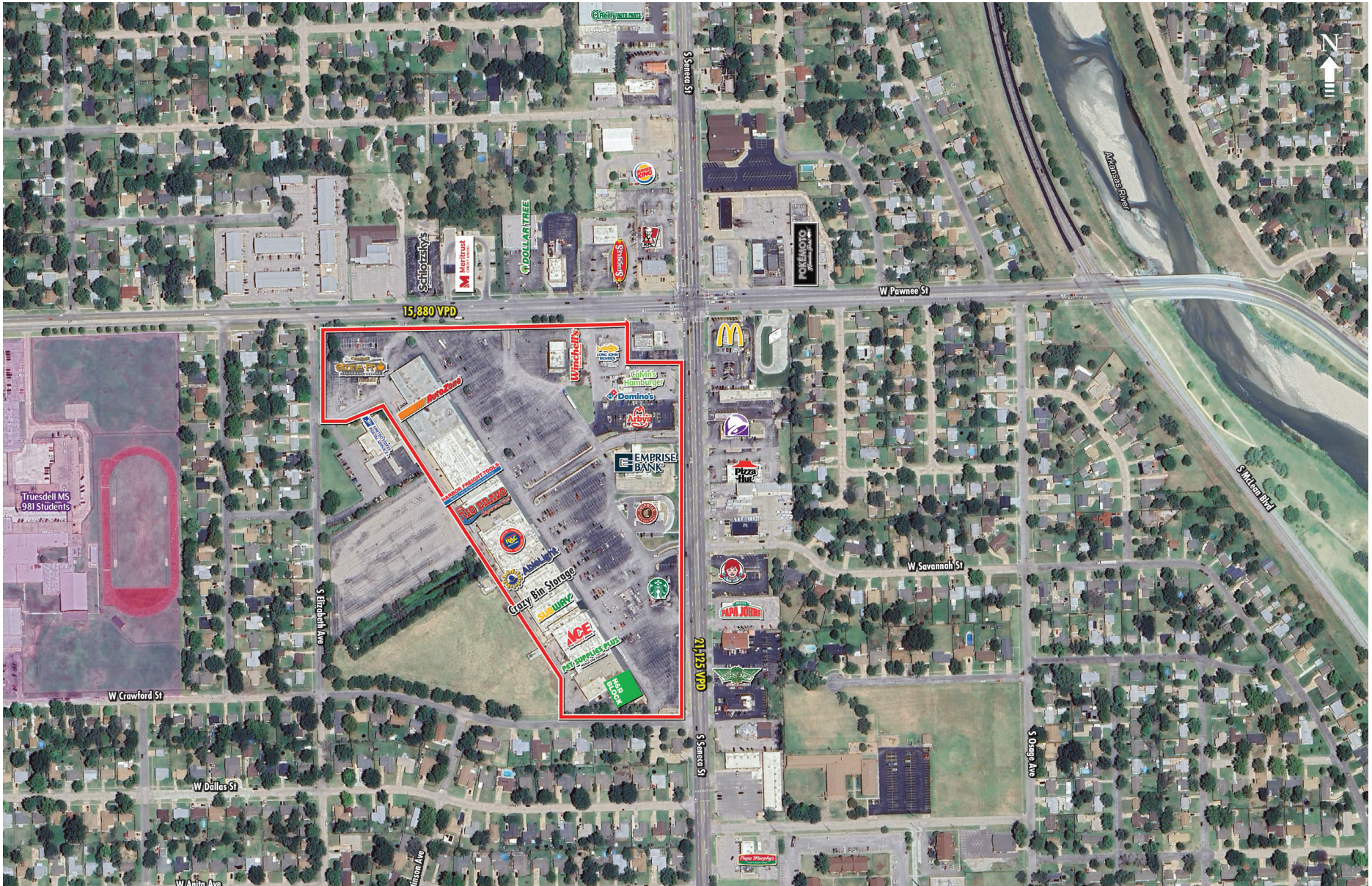
JAKE BURNS
214.572.8425
jburns@theretailconnection.net

SCOTT REID
MANAGING BROKER, PARASELL, INC
949.942.6585

broker@parasell.com
KS LIC.CO00002998

WESTWAY PLAZA

WICHITA, KS | SWC S. SENECA STREET AND W. PAWNEE AVENUE



THE **retail** CONNECTION

RACHEL FORSLUND
214.276.5279
rforlund@theretailconnection.net

JAKE BURNS
214.572.8425
jburns@theretailconnection.net

SCOTT REID
MANAGING BROKER, PARASELL, INC
949.942.6585

broker@parasell.com
KS LIC.CO00002998

WESTWAY PLAZA

WICHITA, KS | SWC S. SENECA STREET AND W. PAWNEE AVENUE



THE **retail** CONNECTION

RACHEL FORSLUND
214.276.5279
rforlund@theretailconnection.net

JAKE BURNS
214.572.8425
jburns@theretailconnection.net

SCOTT REID
MANAGING BROKER, PARASELL, INC
949.942.6585

broker@parasell.com
KS LIC.CO00002998

WESTWAY PLAZA

WICHITA, KS | SWC S. SENECA STREET AND W. PAWNEE AVENUE

Site Plan #	Tenant	SF
1	H&R Block	
2	AVAILABLE	3,552
3	Pet Supplies Plus [coming soon]	
4	AVAILABLE	8,309
5	Westlake Ace Hardware	
6	Future Garden Center	
7	Subway	
8	Crazy Bin Storage	
9	AbleLight Thrift	
10	Rent-a-Center	
11	El Rio Bravo Supermarket	
12	AVAILABLE	2,534
13	AVAILABLE	3,207
14	Harbor Freight	
15	AVAILABLE [demisable]	30,062
16	AutoZone	
17	Oooo Lala Stone Pho	
18	Future Development [NAP]	
19	Winchell's Donuts	
20	Long John Silver's	
21	Calvin's Burgers	
22	Domino's Pizza	
23	Arby's	
24	Emprise Bank	
25	Chipotle	
26	Starbucks	



THE **retail** CONNECTION

RACHEL FORSLUND
214.276.5279
rforlund@theretailconnection.net

JAKE BURNS
214.572.8425
jburns@theretailconnection.net

SCOTT REID
MANAGING BROKER, PARASELL, INC
949.942.6585

broker@parasell.com
KS LIC.CO00002998

WESTWAY PLAZA

WICHITA, KS | SWC S. SENECA STREET AND W. PAWNEE AVENUE



THE **retail** CONNECTION

RACHEL FORSLUND
214.276.5279
rforslund@theretailconnection.net

JAKE BURNS
214.572.8425
jburns@theretailconnection.net

SCOTT REID
MANAGING BROKER, PARASELL, INC
949.942.6585

broker@parasell.com
KS LIC.CO00002998

