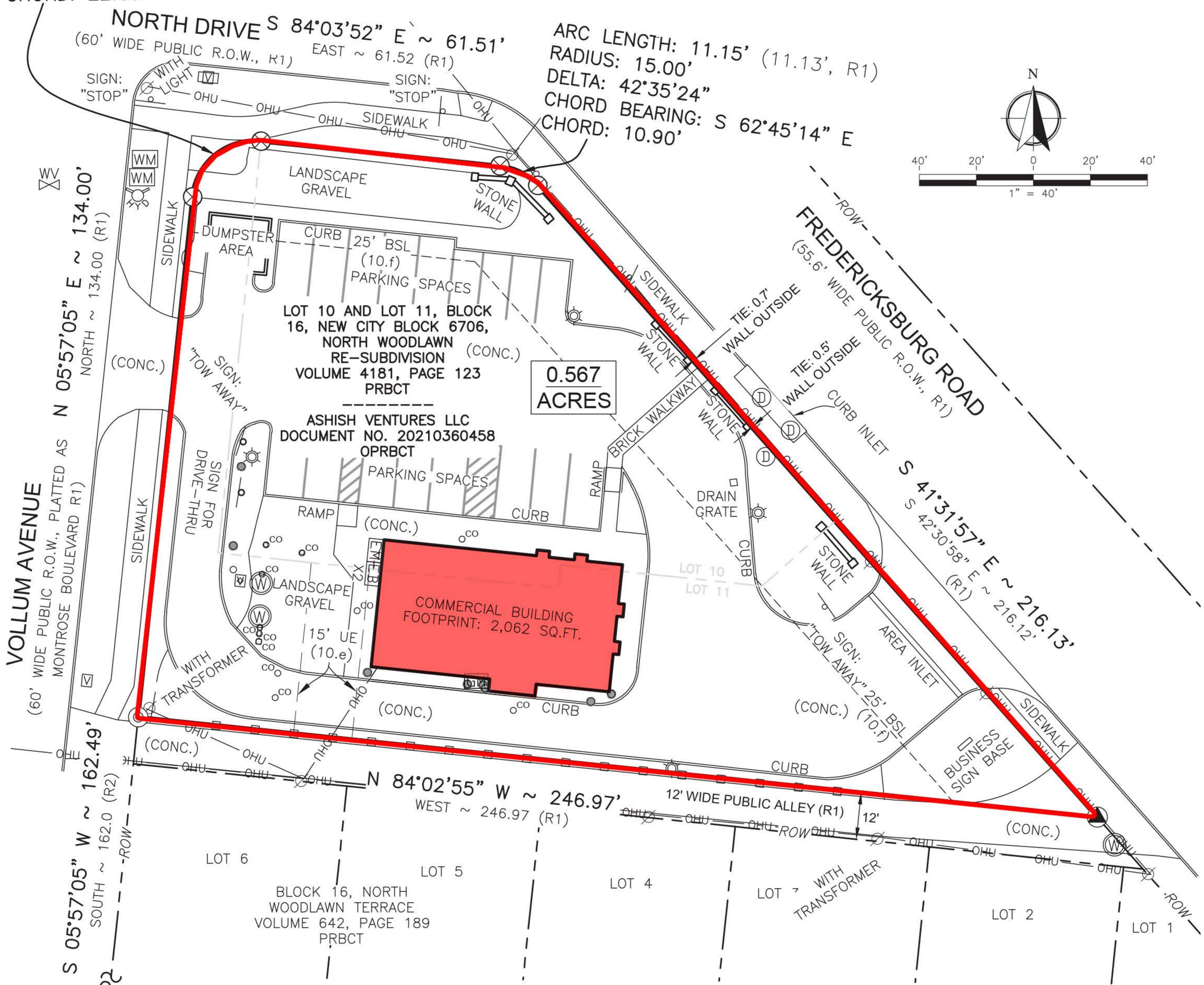
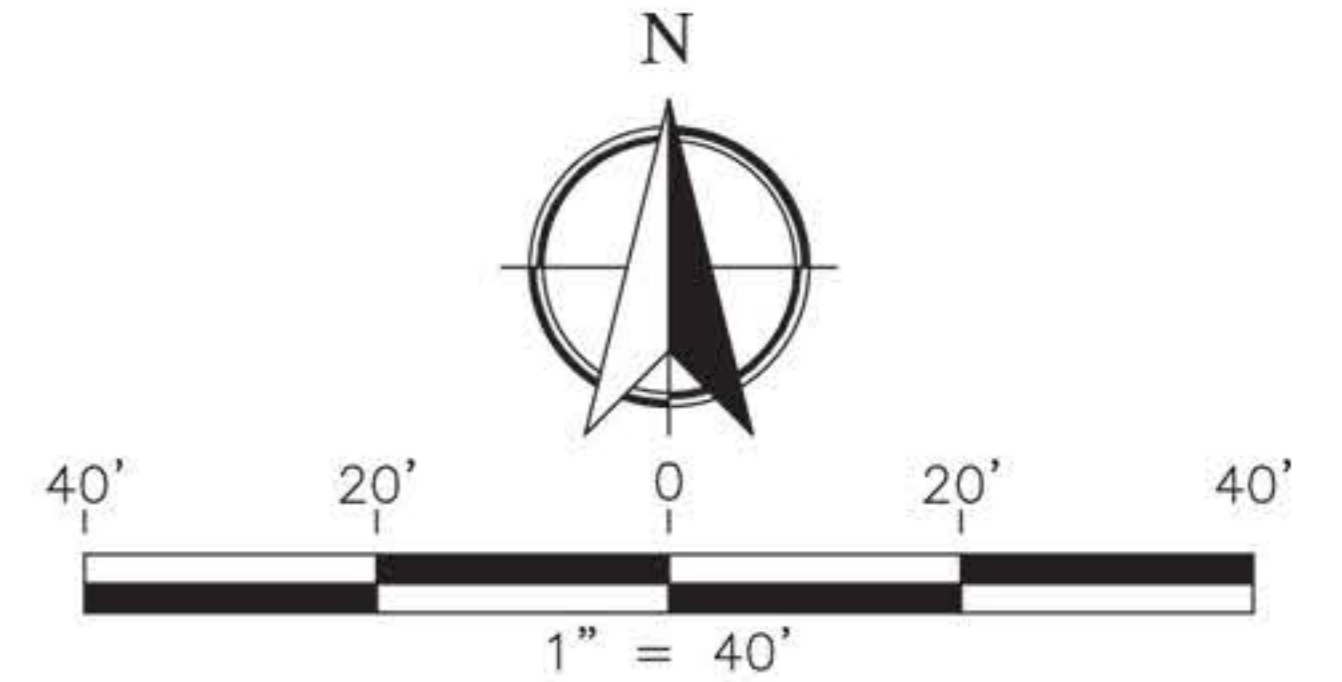


ARC LENGTH: 25.13' (25.13', R1)  
 RADIUS: 16.00'  
 DELTA: 89°59'25"  
 CHORD BEARING: N 50°56'47" E  
 CHORD: 22.63'

ARC LENGTH: 11.15' (11.13', R1)  
 RADIUS: 15.00'  
 DELTA: 42°35'24"  
 CHORD BEARING: S 62°45'14" E  
 CHORD: 10.90'



NORTH DRIVE S 84°03'52" E ~ 61.51'  
 (60' WIDE PUBLIC R.O.W., R1) EAST ~ 61.52 (R1)

VOLLUM AVENUE  
 (60' WIDE PUBLIC R.O.W., PLATTED AS  
 MONTROSE BOULEVARD R1)  
 N 05°57'05" E ~ 134.00'  
 NORTH ~ 134.00 (R1)

(60' WIDE PUBLIC R.O.W., PLATTED AS  
 MONTROSE BOULEVARD R1)

LOT 10 AND LOT 11, BLOCK  
 16, NEW CITY BLOCK 6706,  
 NORTH WOODLAWN  
 RE-SUBDIVISION (CONC.)  
 VOLUME 4181, PAGE 123  
 PRBCT

0.567  
 ACRES

ASHISH VENTURES LLC  
 DOCUMENT NO. 20210360458  
 OPRBCT

COMMERCIAL BUILDING  
 FOOTPRINT: 2,062 SQ.FT.

FREDERICKSBURG ROAD  
 (55.6' WIDE PUBLIC R.O.W., R1)  
 S 41°31'57" E ~ 216.13'  
 S 42°30'58" E ~ 216.12'

LOT 6  
 BLOCK 16, NORTH  
 WOODLAWN TERRACE  
 VOLUME 642, PAGE 189  
 PRBCT

LOT 5

LOT 4

LOT 3 WITH  
 TRANSFORMER

LOT 2

LOT 1

N 84°02'55" W ~ 246.97'  
 WEST ~ 246.97 (R1)

12' WIDE PUBLIC ALLEY (R1)

S 05°57'05" W ~ 162.49'  
 SOUTH ~ 162.0 (R2)

(CONC.)

(CONC.)

(CONC.)

(CONC.)

(CONC.)