

BULVERDE CROSSING

SAN ANTONIO, TX | 17910 BULVERDE ROAD



CENTER SIZE: 22,381 SF

AVAILABILITY:
1,240 SF | 1,484 SF | 2,151 SF

ESTIMATED NNN: \$12.63 PSF

LEASE RATES:
\$34.00 PSF – \$36.00 PSF

AREA RETAILERS:



DEMOGRAPHICS:

	1 MILE	3 MILE	5 MILE
2023 Population	5,321	85,615	209,606
2023 Daytime Population	4,634	75,737	217,150
2023 Total Households	2,396	33,014	81,572
2023 Average HH Income	\$118,971	\$110,595	\$106,443

TRAFFIC COUNTS:

Loop 1604: 99,978 VPD
Bulverde Road: 38,312 VPD

BULVERDE CROSSING

SAN ANTONIO, TX | 17910 BULVERDE ROAD



THE **retail** CONNECTION

FOR MORE INFORMATION, PLEASE CONTACT:

MIKE GARANSUAY

210.536.2240

mgaransuay@theretailconnection.net

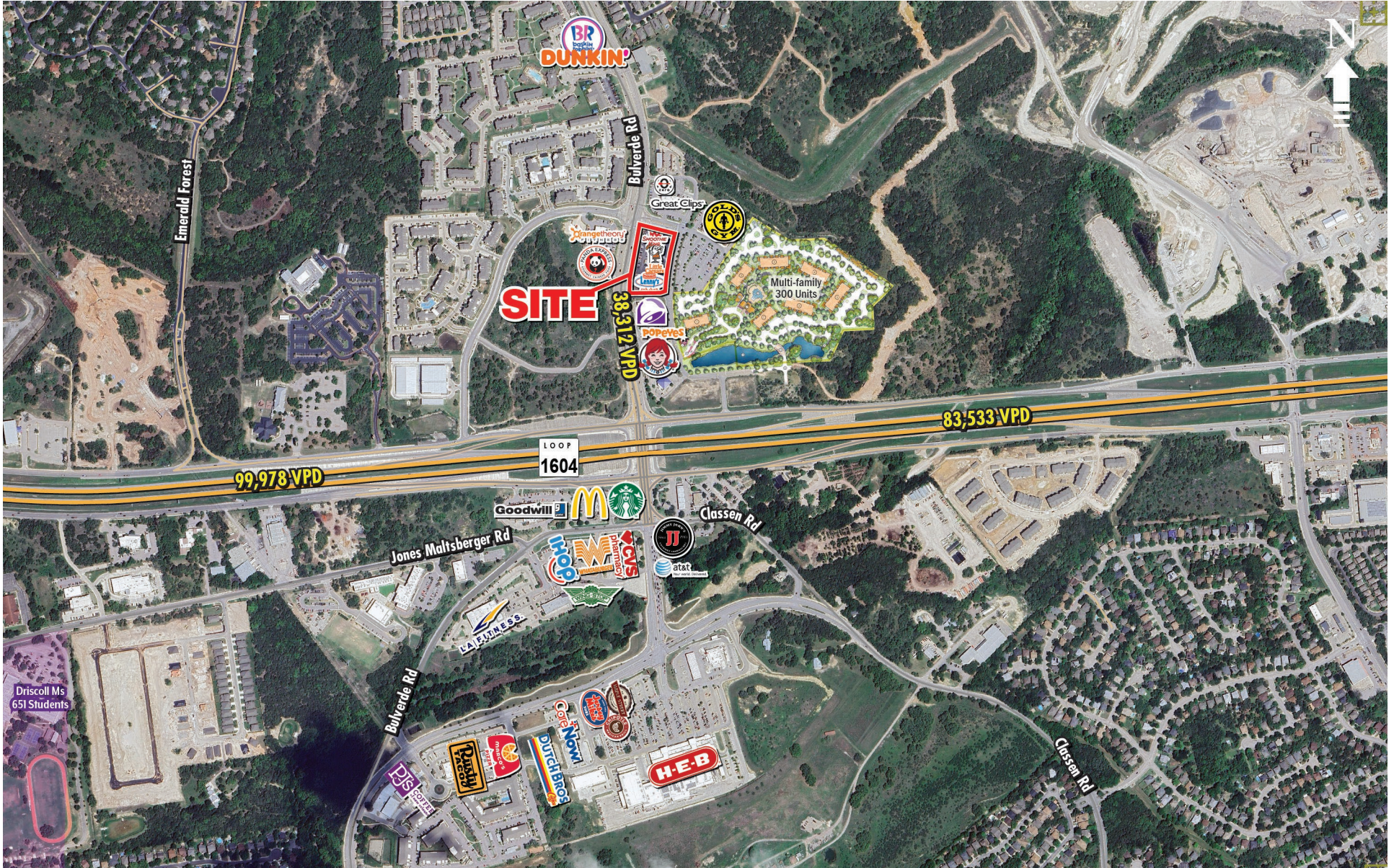
NICK ALTOMARE

210.408.6468

naltomare@theretailconnection.net

BULVERDE CROSSING

SAN ANTONIO, TX | 17910 BULVERDE ROAD



THE **retail** CONNECTION

FOR MORE INFORMATION, PLEASE CONTACT:

MIKE GARANSUAY
210.536.2240
mgaransuay@theretailconnection.net

NICK ALTOMARE
210.408.6468
naltomare@theretailconnection.net

BULVERDE CROSSING

SAN ANTONIO, TX | 17910 BULVERDE ROAD



THE **retail** CONNECTION

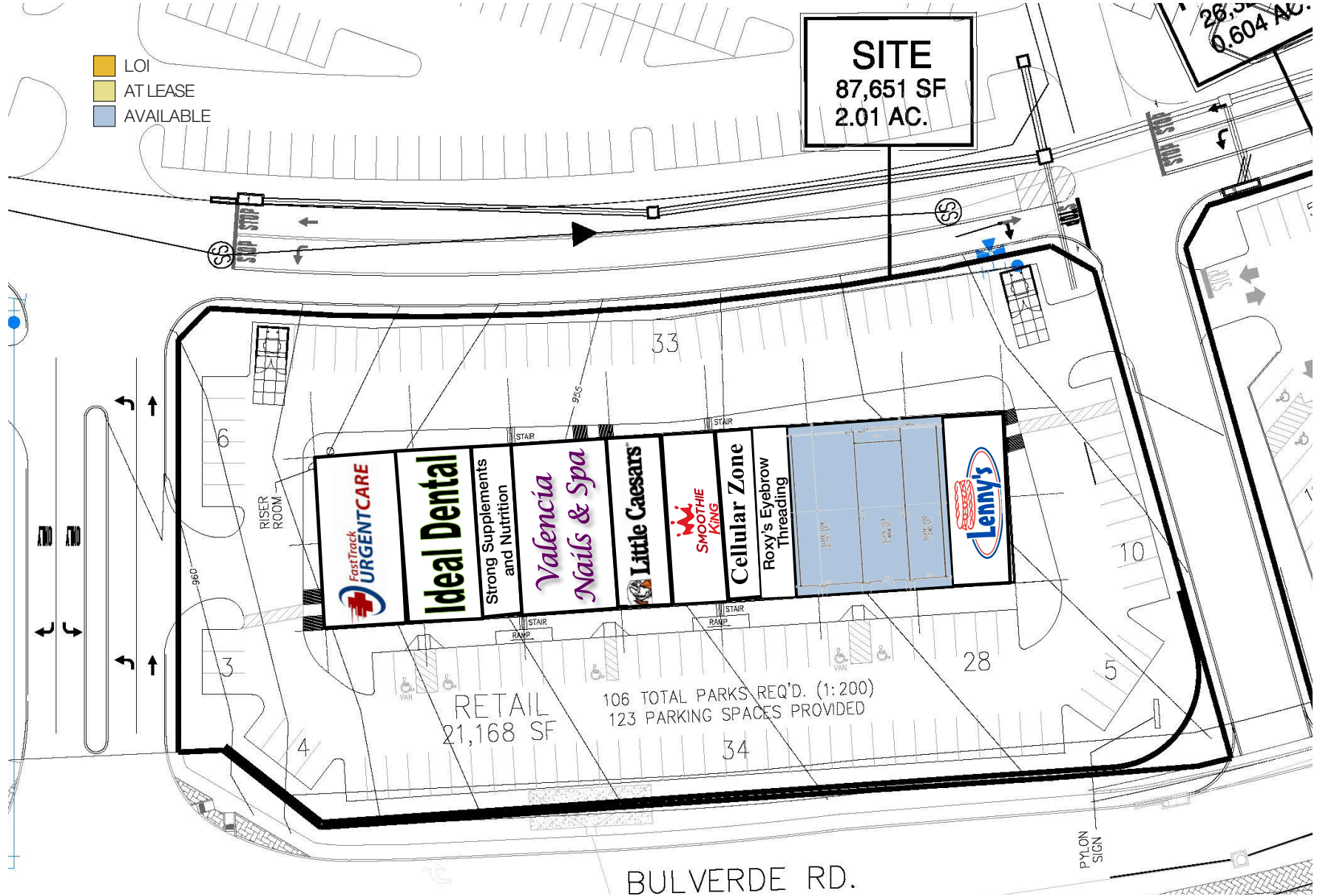
FOR MORE INFORMATION, PLEASE CONTACT:

MIKE GARANSUAY
210.536.2240
mgaransuay@theretailconnection.net

NICK ALTOMARE
210.408.6468
naltomare@theretailconnection.net

BULVERDE CROSSING

SAN ANTONIO, TX | 17910 BULVERDE ROAD



BULVERDE CROSSING

SAN ANTONIO, TX | 17910 BULVERDE ROAD

