

REDUCED PRICE

FM 529 AND BARKER CYPRESS LAND

HOUSTON, TX | NEQ FM 529 AND BARKER CYPRESS



AVAILABLE:
 PARCEL A: +/-4.64 ACRES
 PARCEL B: +/-1.38 ACRES

PURCHASE PRICE:
 PLEASE CALL BROKER

AREA RETAILERS:

- MOTIVATED SELLER
- +/-6 acres split into 2 parcels
- Adjacent to Langham Creek High School [2,800+ students]
- Major intersection with +/-60,000 VPD
- Down the street from Lone Star College, Cy-Fair and Berry Center

DEMOGRAPHICS:	1 MILE	3 MILE	5 MILE
2023 Population	21,360	176,784	347,613
2023 Daytime Population	15,611	127,568	271,703
2023 Average HH Income	\$96,875	\$105,787	\$112,604
2023 Median HH Income	\$77,783	\$83,122	\$85,061

TRAFFIC COUNTS:
FM 529: 28,063 VPD
Barker Cypress: 32,003 VPD

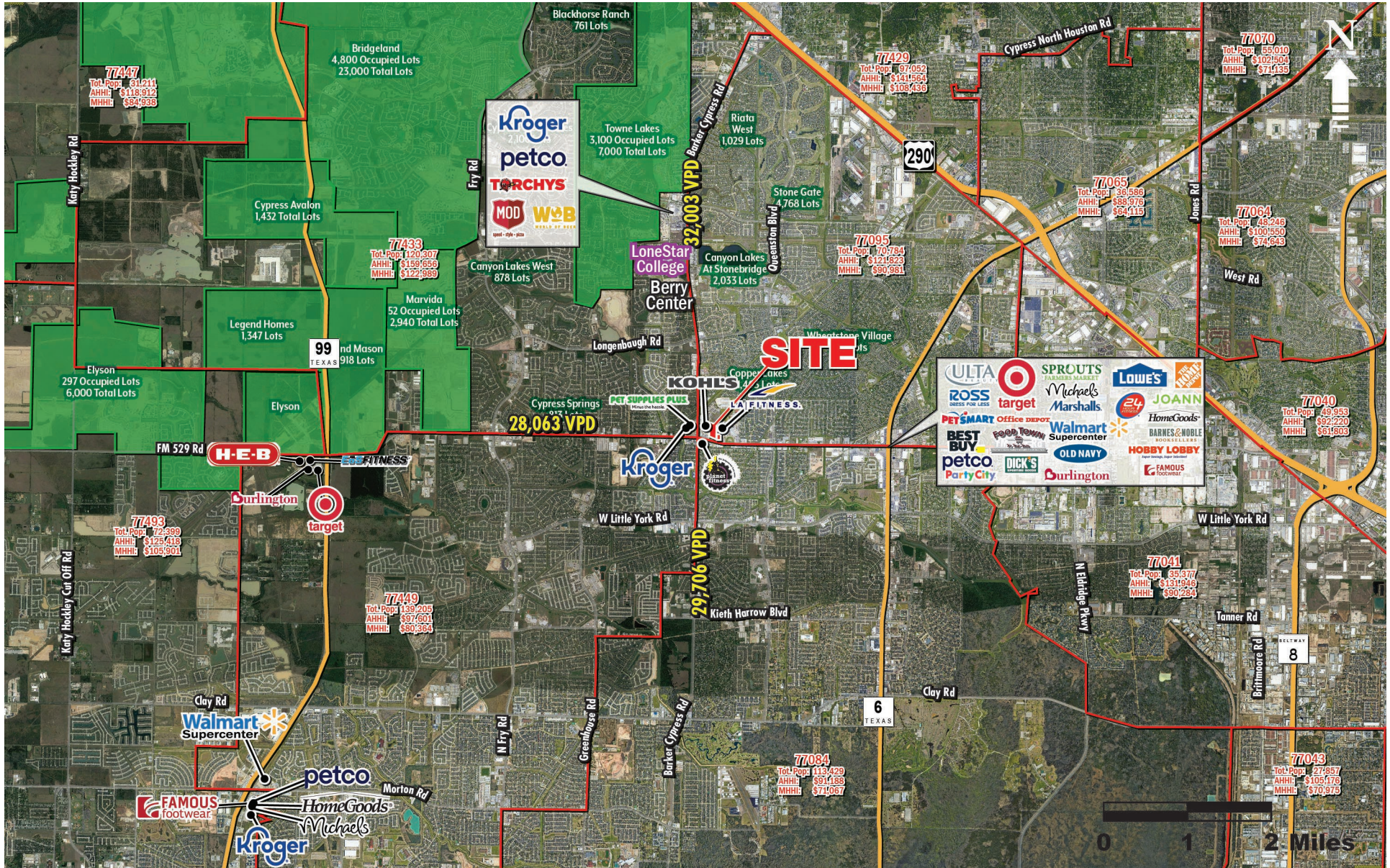


FOR MORE INFO, PLEASE CONTACT:

PLEASE CALL FOR INFORMATION
 713.547.5555

FM 529 AND BARKER CYPRESS LAND

HOUSTON, TX | NEQ FM 529 AND BARKER CYPRESS



FM 529 AND BARKER CYPRESS LAND

HOUSTON, TX | NEQ FM 529 AND BARKER CYPRESS



FM 529 AND BARKER CYPRESS LAND

HOUSTON, TX | NEQ FM 529 AND BARKER CYPRESS

