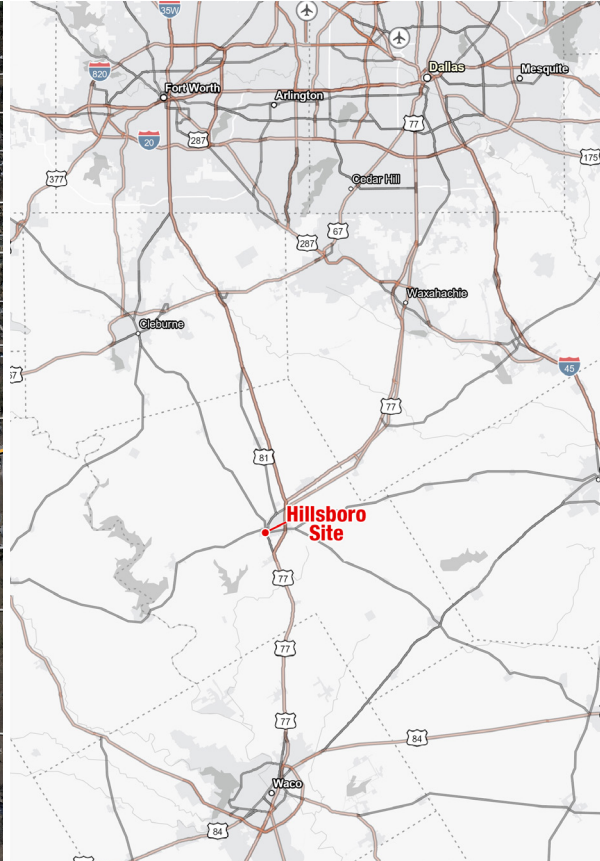
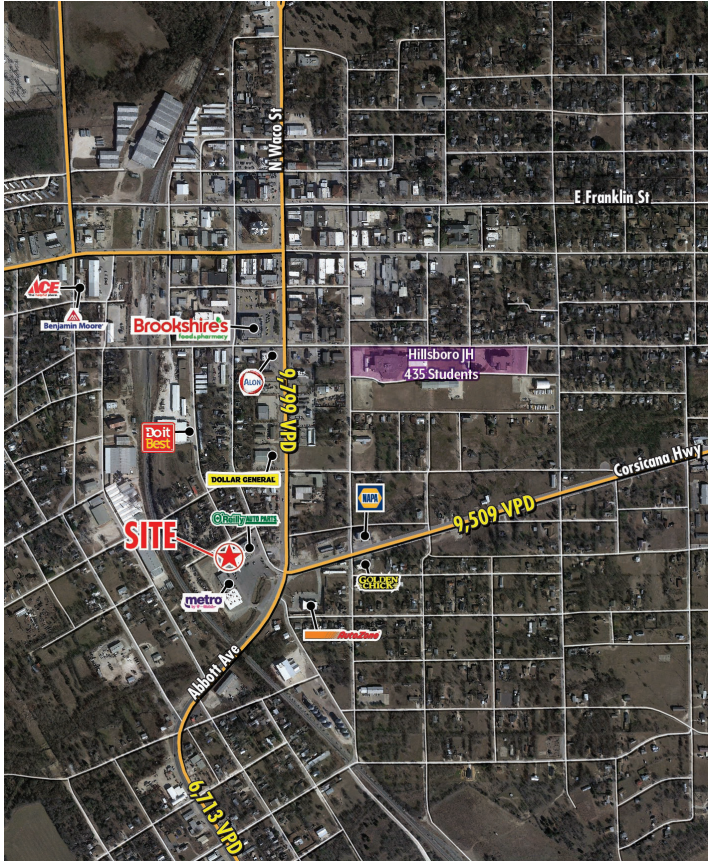


HILLSBORO CENTER | FORMER BEALLS FOR LEASE

HILLSBORO, TX | N. WACO STREET AND CORSICANA HIGHWAY



- O'Reilly's anchored strip center
- Located in the heart of Hillsboro, TX

DEMOGRAPHICS:	5 MILE	10 MILE
2023 Population	9,526	14,624
2023 Total Households	3,416	5,372
2023 Daytime Population	11,147	15,289
2023 Average HH Income	\$74,776	\$79,936

TRAFFIC COUNTS:
N. Waco Street: 9,799 VPD
Corsicana Highway: 9,509 VPD

CENTER SIZE: 51,883 SF

AVAILABILITY: 12,672 SF [FORMER BEALLS] & 8,600 SF

FOR LEASE: PLEASE CALL FOR INFO.

AREA RETAILERS:

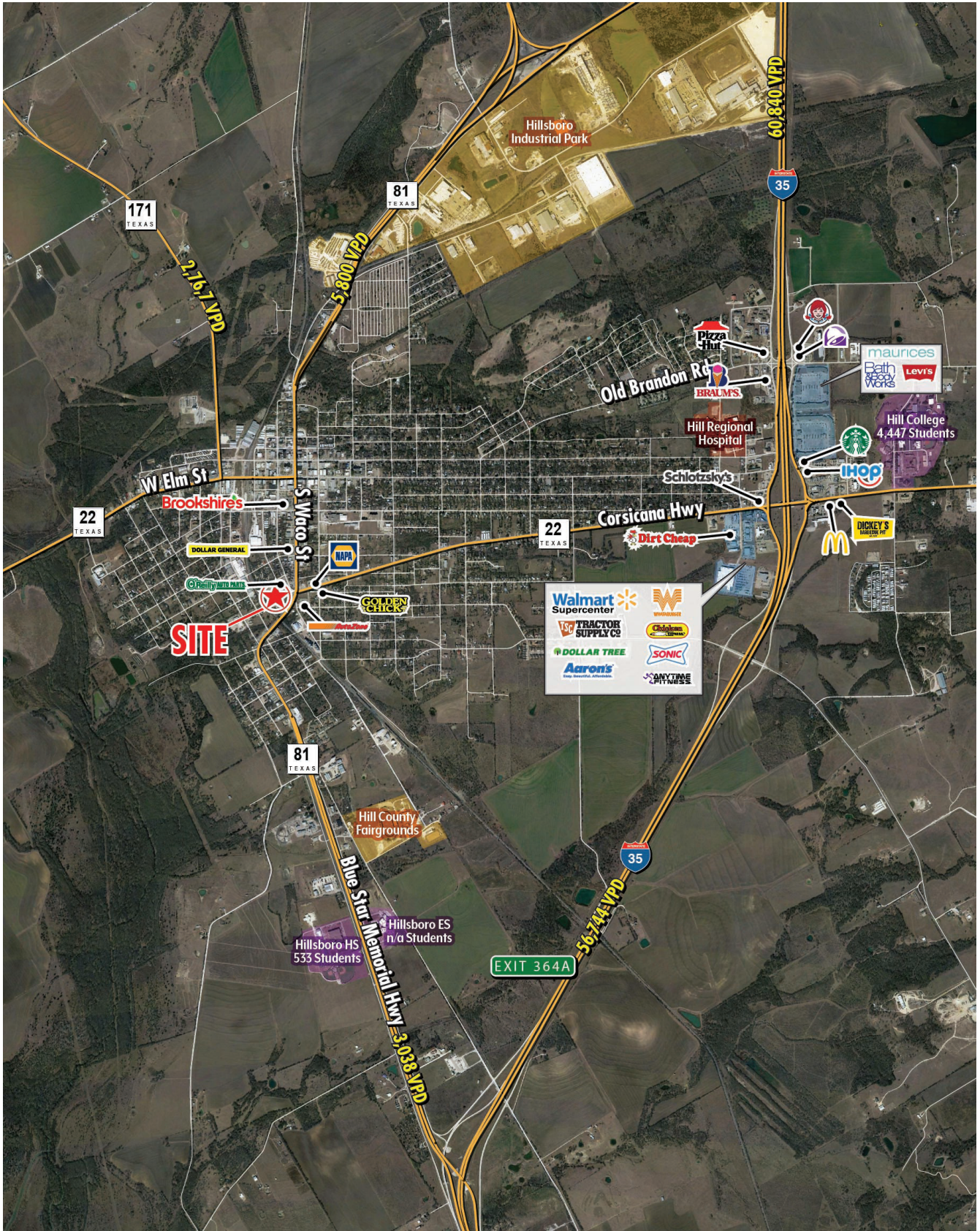


FOR MORE INFORMATION, PLEASE CONTACT:

MICHAEL SWEET 214.572.8459 msweet@theretailconnection.net	STEVE GREENBERG 214.236.9501 sgreenberg@theretailconnection.net
--	--

HILLSBORO CENTER | FORMER BEALLS FOR LEASE

HILLSBORO, TX | N. WACO STREET AND CORSICANA HIGHWAY



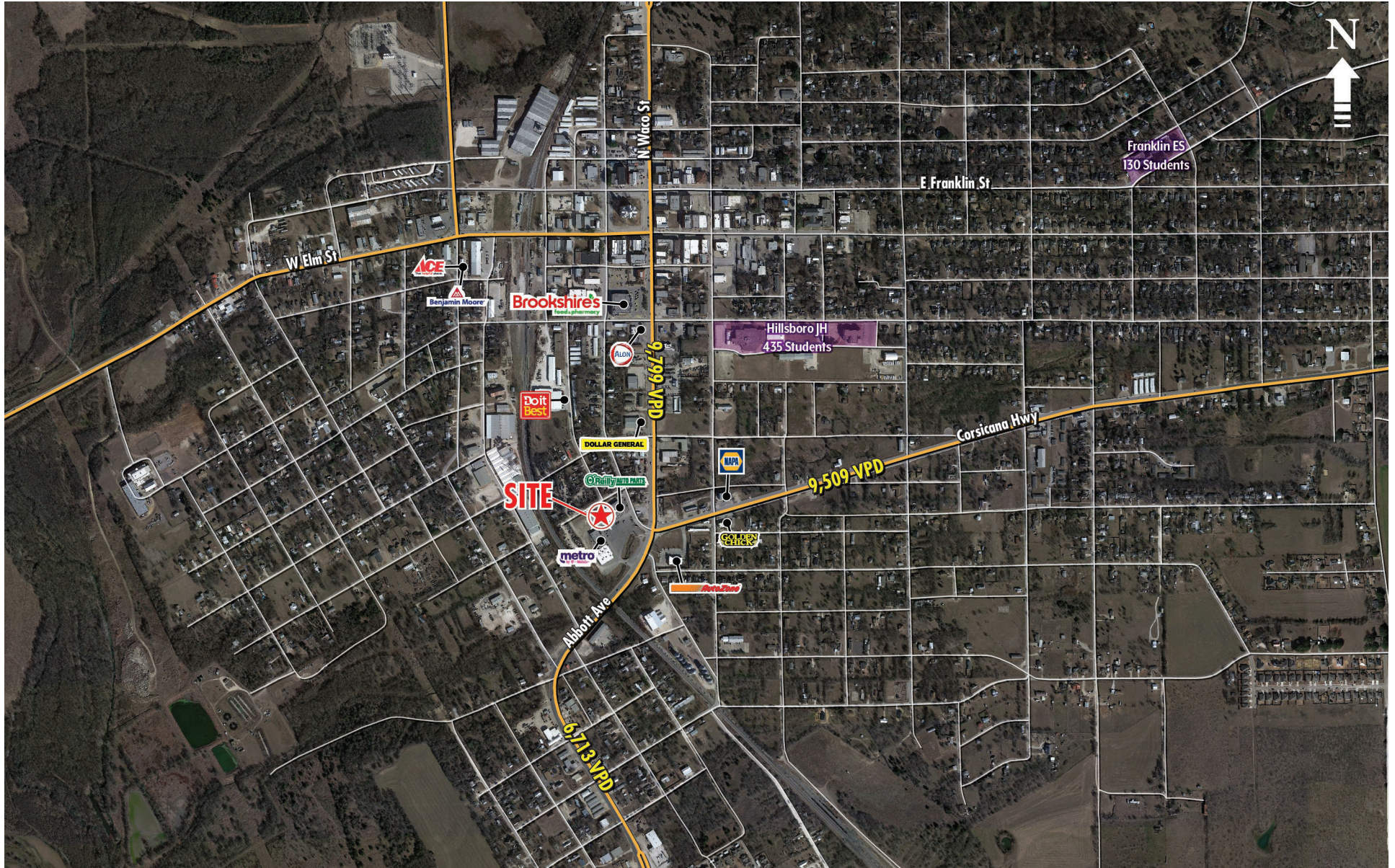
THE **retail** CONNECTION

FOR MORE INFORMATION, PLEASE CONTACT:

MICHAEL SWEET 214.572.8459 msweet@theretailconnection.net	STEVE GREENBERG 214.236.9501 sgreenberg@theretailconnection.net
--	--

HILLSBORO CENTER | FORMER BEALLS FOR LEASE

HILLSBORO, TX | N. WACO STREET AND CORSICANA HIGHWAY



THE **retail** CONNECTION

FOR MORE INFORMATION, PLEASE CONTACT:

MICHAEL SWEET
214.572.8459
msweet@theretailconnection.net

STEVE GREENBERG
214.236.9501
sgreenberg@theretailconnection.net

HILLSBORO CENTER | FORMER BEALLS FOR LEASE

HILLSBORO, TX | N. WACO STREET AND CORSICANA HIGHWAY



THE **retail** CONNECTION

FOR MORE INFORMATION, PLEASE CONTACT:

MICHAEL SWEET
214.572.8459
msweet@theretailconnection.net

STEVE GREENBERG
214.236.9501
sgreenberg@theretailconnection.net

HILLSBORO CENTER | FORMER BEALLS FOR LEASE

HILLSBORO, TX | N. WACO STREET AND CORSICANA HIGHWAY

MARTIN STREET

