

# FORMER CANO HEALTH BUILDING

SAN ANTONIO, TX | 7913 BANDERA ROAD



**AVAILABILITY:** +/-4,836 SF  
 FREESTANDING BUILDING  
 MEDICAL USE FACILITY  
 [1<sup>ST</sup> FLOOR: 3,050 SF  
 2<sup>ND</sup> FLOOR: 1,786 SF]

**LEASE RATES:**  
 PLEASE CALL FOR DETAILS

**EST. NNN:** \$10.41 PSF



**AREA RETAILERS:**

**DUTCH BROS** **CHIPOTLE**  
**BURGER KING** **GOOD YEAR**  
**Walmart\*** **PANDA EXPRESS**  
**Domino's**

DEMOGRAPHICS:	1 MILE	3 MILE	5 MILE
2023 Population	10,984	135,453	352,727
2023 Daytime Population	11,687	104,049	388,975
2023 Total Households	4,361	53,712	140,475
2023 Average HH Income	\$87,144	\$91,426	\$86,649

TRAFFIC COUNTS:
Bandera Road: 51,319 VPD
Mainland Drive: 16,493 VPD

THE **retail** CONNECTION

FOR MORE INFORMATION, PLEASE CONTACT:

**MIKE GARANSUAY**  
 210.536.2240  
 mgaransuay@theretailconnection.net



# FORMER CANO HEALTH BUILDING

SAN ANTONIO, TX | 7913 BANDERA ROAD



THE **retail** CONNECTION

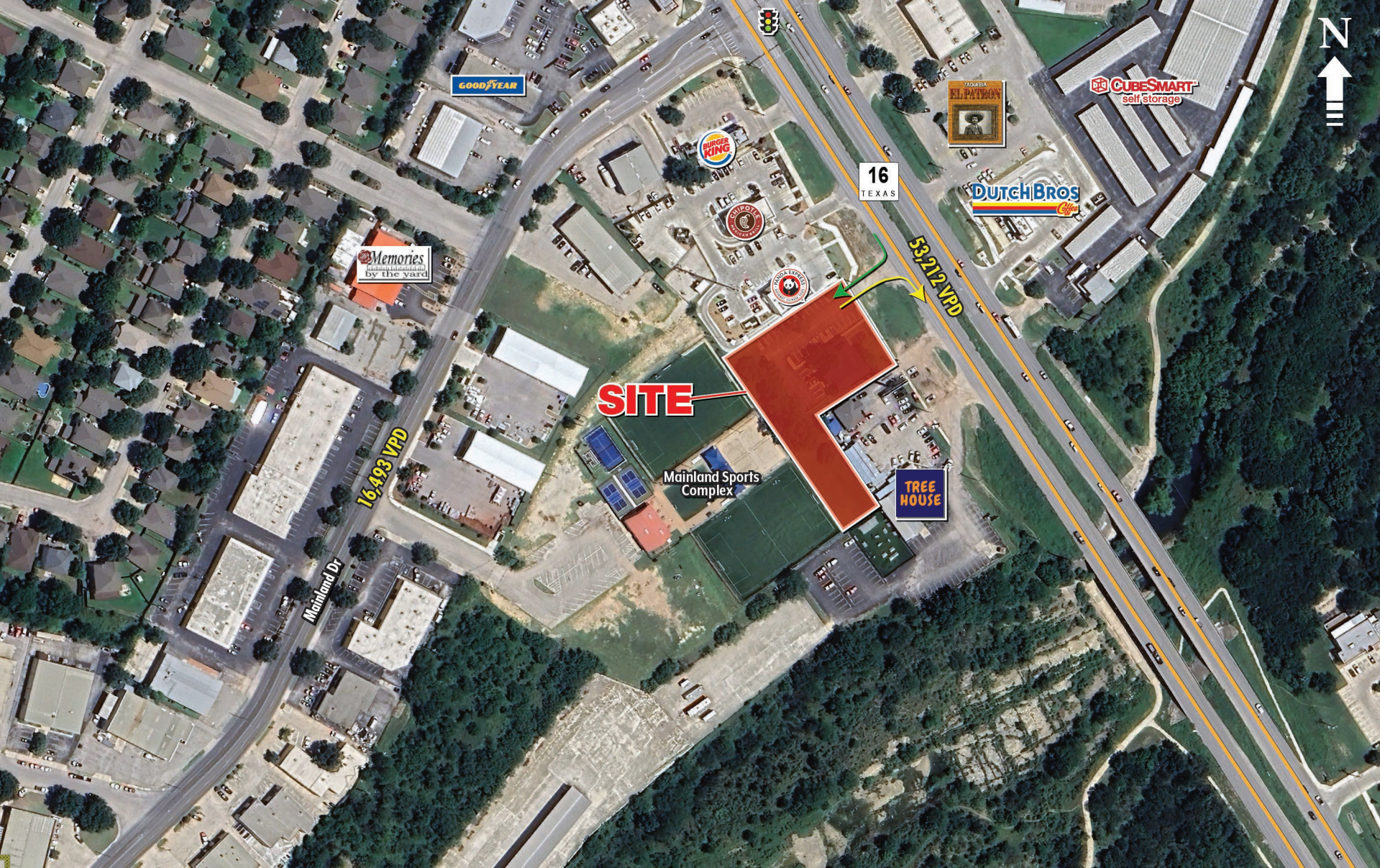
FOR MORE INFORMATION, PLEASE CONTACT:

MIKE GARANSUAY  
210.536.2240  
mgaransuay@theretailconnection.net



# FORMER CANO HEALTH BUILDING

SAN ANTONIO, TX | 7913 BANDERA ROAD



THE **retail** CONNECTION

FOR MORE INFORMATION, PLEASE CONTACT:

**MIKE GARANSUAY**  
210.536.2240  
mgaransuay@theretailconnection.net





