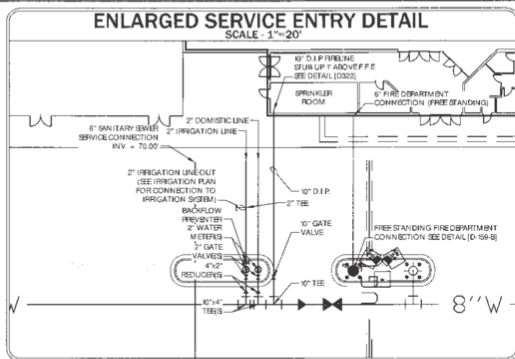
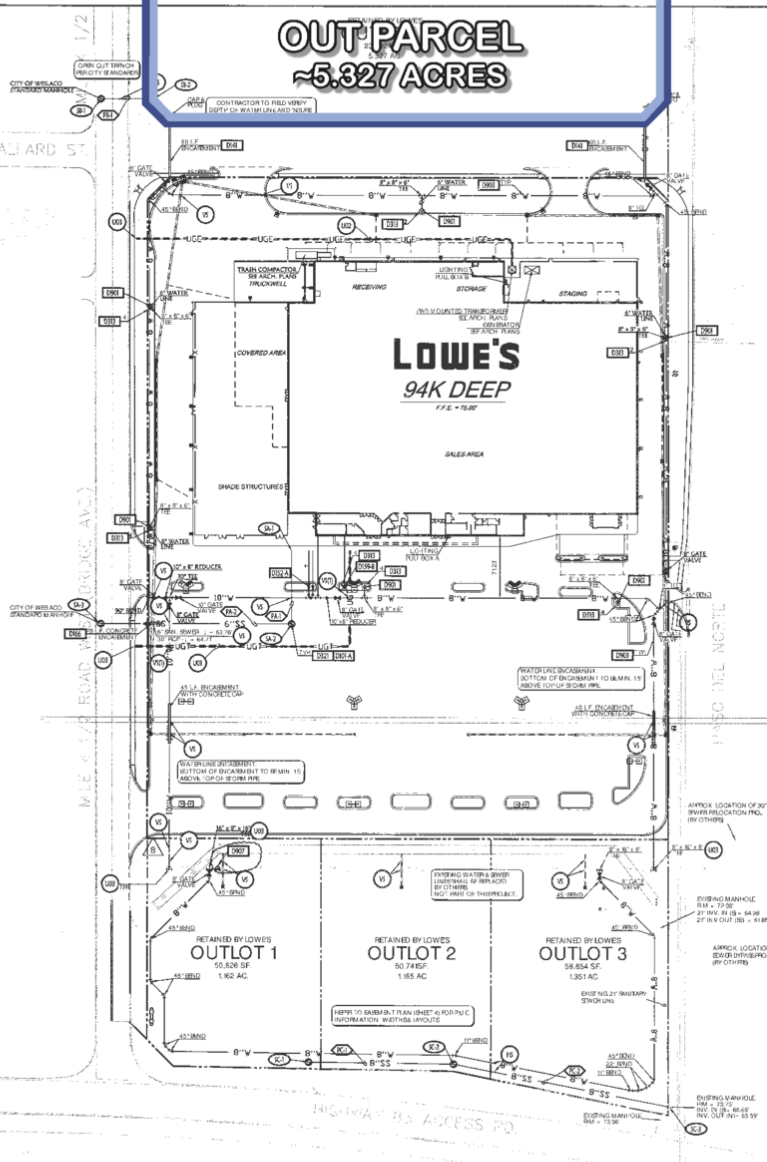


# OUT PARCEL ~5.327 ACRES



#### REVISIONS

NO.	DATE	DESCRIPTION
1		
2		
3		
4		
5		
6		
7		
8		

#### UTILITY GENERAL NOTES:

ALL UTILITIES SHOWN ARE BASED ON RECORD DRAWINGS AND FIELD SURVEY DATA. THE USER SHALL VERIFY THE LOCATION AND DEPTH OF ALL UTILITIES PRIOR TO CONSTRUCTION. THE USER SHALL BE RESPONSIBLE FOR OBTAINING ALL NECESSARY PERMITS AND CONNECTIONS TO ALL UTILITIES. THE USER SHALL MAINTAIN A MINIMUM 12" VERTICAL CLEARANCE UNDER ALL OVERHEAD UTILITIES. THE USER SHALL MAINTAIN A MINIMUM 18" VERTICAL CLEARANCE UNDER ALL UNDERGROUND UTILITIES. THE USER SHALL MAINTAIN A MINIMUM 18" VERTICAL CLEARANCE UNDER ALL UNDERGROUND UTILITIES. THE USER SHALL MAINTAIN A MINIMUM 18" VERTICAL CLEARANCE UNDER ALL UNDERGROUND UTILITIES.

- #### UTILITY DETAILS
- 1001 STANDARD MANHOLE IDEAL
  - 1002 TYPICAL WATER FEEL BEEBEE INSTALLATION UNDERGROUND
  - 1003 12" x 2" WATER PIPE WITH DOUBLE CHECK VALVE
  - 1004 RFP STANDING PIPE (RFP) INLET
  - 1005 UTILITY PIPE CONCEPT DRAWING
  - 1006 SLOPE DETAIL (SEE SHEET FOR QUANTITY)
  - 1007 TRENCH AND BACKFILL IDEAL
  - 1008 FIRE HYDRANT ANCHOR
  - 1009 SLOPING DETAIL FOR PUBLIC LINES
  - 1010 TRENCH JUNCTION MANHOLE INSTALLATION ON MAIN LINE

#### SITE UTILITY CONTACTS

**CITY OF WESLACO**  
PUBLIC WORKS/STREET LIGHTS  
CITY MANAGER: 300 S. MAIN STREET, WESLACO, TX 75798  
CITY ENGINEER: 300 S. MAIN STREET, WESLACO, TX 75798

**UTILITY CONTACTS**  
SOUTHERN UNION GAS: 1000 W. WYOMING, WESLACO, TX 75798  
SOUTHERN UNION ELECTRIC: 1000 W. WYOMING, WESLACO, TX 75798  
SOUTHERN UNION TELEPHONE: 1000 W. WYOMING, WESLACO, TX 75798

#### TCEQ UTILITY NOTES

1. ALL UTILITIES SHALL BE INSTALLED IN ACCORDANCE WITH THE TCEQ UTILITY CODE. THE USER SHALL MAINTAIN A MINIMUM 12" VERTICAL CLEARANCE UNDER ALL OVERHEAD UTILITIES. THE USER SHALL MAINTAIN A MINIMUM 18" VERTICAL CLEARANCE UNDER ALL UNDERGROUND UTILITIES. THE USER SHALL MAINTAIN A MINIMUM 18" VERTICAL CLEARANCE UNDER ALL UNDERGROUND UTILITIES.

- #### UTILITY PROPOSED FEATURES
- BOUNDARY LINE
  - ROUTE OF MAIN LINE
  - SHOULDER
  - CONCRETE CURB AND GUTTER
  - SEWER MAIN (SEE GRADING PLAN FOR POINTS)
  - SEWER SERVICE
  - WATER SERVICE
  - UNDERGROUND ELECTRIC SERVICE
  - UNDERGROUND TELEPHONE SERVICE
  - OVERHEAD TELEPHONE SERVICE
  - OVERHEAD GAS SERVICE
  - PROPPOSED SEE GRADING PLAN FOR THIS

- #### UTILITY NOTES
- 1. MAINTAIN MINIMUM 12" VERTICAL CLEARANCE
  - 2. MAINTAIN MINIMUM 18" VERTICAL CLEARANCE UNDER ALL UNDERGROUND UTILITIES
  - 3. MAINTAIN MINIMUM 18" VERTICAL CLEARANCE UNDER ALL UNDERGROUND UTILITIES
  - 4. MAINTAIN MINIMUM 18" VERTICAL CLEARANCE UNDER ALL UNDERGROUND UTILITIES
  - 5. MAINTAIN MINIMUM 18" VERTICAL CLEARANCE UNDER ALL UNDERGROUND UTILITIES
  - 6. MAINTAIN MINIMUM 18" VERTICAL CLEARANCE UNDER ALL UNDERGROUND UTILITIES
  - 7. MAINTAIN MINIMUM 18" VERTICAL CLEARANCE UNDER ALL UNDERGROUND UTILITIES
  - 8. MAINTAIN MINIMUM 18" VERTICAL CLEARANCE UNDER ALL UNDERGROUND UTILITIES

#### UTILITY PLAN

ALL UTILITIES SHOWN ARE BASED ON RECORD DRAWINGS AND FIELD SURVEY DATA. THE USER SHALL VERIFY THE LOCATION AND DEPTH OF ALL UTILITIES PRIOR TO CONSTRUCTION. THE USER SHALL BE RESPONSIBLE FOR OBTAINING ALL NECESSARY PERMITS AND CONNECTIONS TO ALL UTILITIES. THE USER SHALL MAINTAIN A MINIMUM 12" VERTICAL CLEARANCE UNDER ALL OVERHEAD UTILITIES. THE USER SHALL MAINTAIN A MINIMUM 18" VERTICAL CLEARANCE UNDER ALL UNDERGROUND UTILITIES. THE USER SHALL MAINTAIN A MINIMUM 18" VERTICAL CLEARANCE UNDER ALL UNDERGROUND UTILITIES.

#### SANITARY SEWER SCHEDULE

ITEM NO.	DESCRIPTION	QUANTITY	UNIT	PRICE	TOTAL
1001	STANDARD MANHOLE IDEAL	1	EA	100.00	100.00
1002	TYPICAL WATER FEEL BEEBEE INSTALLATION UNDERGROUND	1	EA	200.00	200.00
1003	12" x 2" WATER PIPE WITH DOUBLE CHECK VALVE	1	EA	300.00	300.00
1004	RFP STANDING PIPE (RFP) INLET	1	EA	150.00	150.00
1005	UTILITY PIPE CONCEPT DRAWING	1	EA	50.00	50.00
1006	SLOPE DETAIL (SEE SHEET FOR QUANTITY)	1	EA	100.00	100.00
1007	TRENCH AND BACKFILL IDEAL	1	EA	150.00	150.00
1008	FIRE HYDRANT ANCHOR	1	EA	200.00	200.00
1009	SLOPING DETAIL FOR PUBLIC LINES	1	EA	100.00	100.00
1010	TRENCH JUNCTION MANHOLE INSTALLATION ON MAIN LINE	1	EA	300.00	300.00

**Czark Civil Engineering Inc.**  
Bentonville • Kansas City • Austin

---

**LOWE'S HOME CENTERS, INC.**  
1855 COURTS BRIDGE ROAD  
WILKESBORO, NC 28687  
336.688.4007 (N) 336.688.3287 (F)

---

**UTILITY PLAN**

**LOWE'S OF WESLACO**  
815 HWY. 63 & BRIDGEWAY  
WESLACO, TX 75798

DATE: 03/27/08  
DRAWING NUMBER: 08