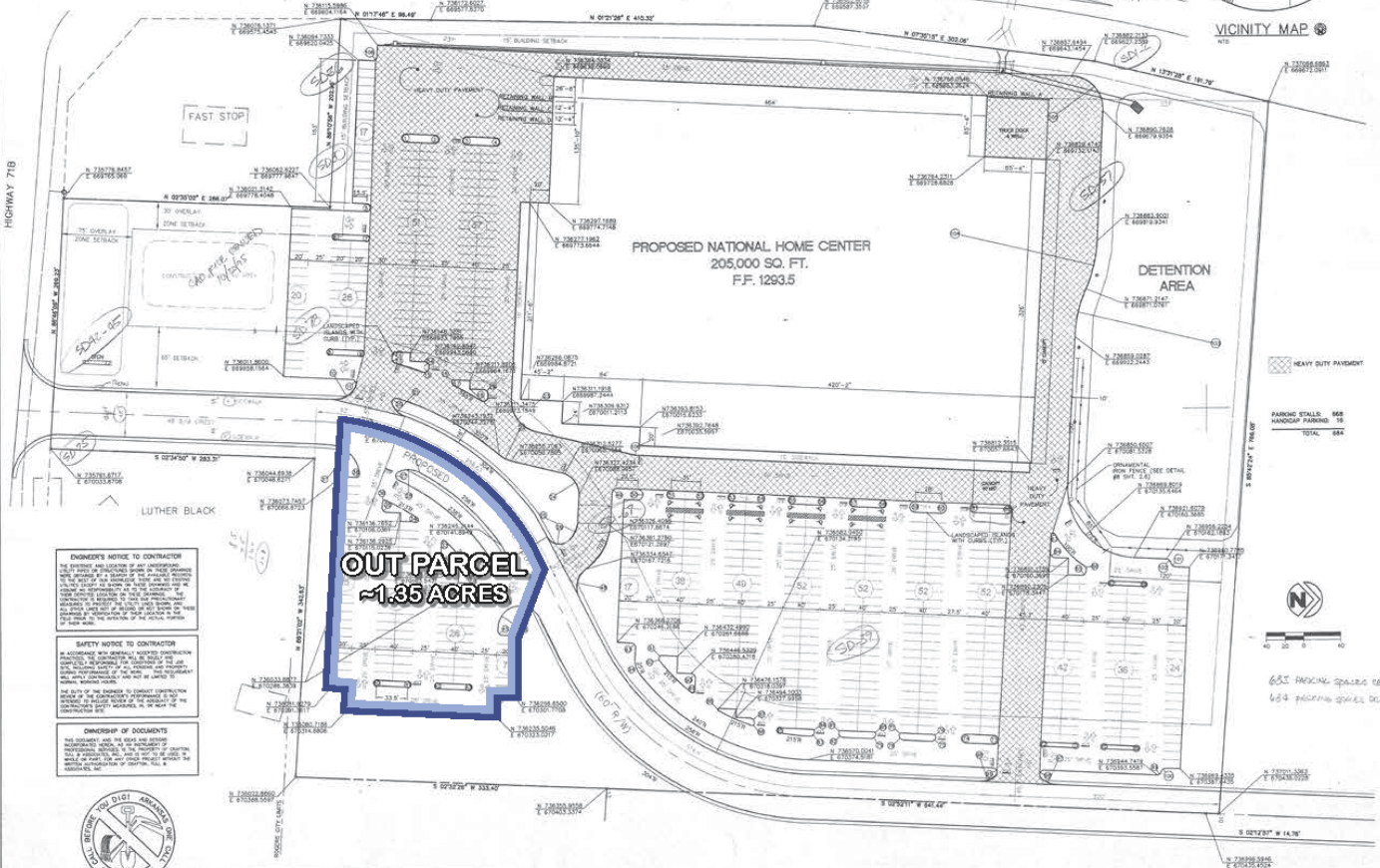


PT#	RADIUS	COORDINATES	PT#	RADIUS	COORDINATES	PT#	RADIUS	COORDINATES	PT#	RADIUS	COORDINATES	PT#	RADIUS	COORDINATES	PT#	RADIUS	COORDINATES
1	4.5	N 28144.9007 E 69675.7932	24	3.5	N 73632.9912 E 670287.7088	66	2.5	N 73668.1374 E 670717.0665	87	0	N 73668.8770 E 670333.7768	108	1.0	N 73645.2527 E 670288.6866	88	2.5	N 73668.1374 E 670717.0665
2	4.5	N 736178.8009 E 69675.4274	25	35.18	N 73632.9912 E 670287.7088	67	2.5	N 73668.1374 E 670717.0665	88	1.0	N 73645.2527 E 670288.6866	109	0	N 73668.8770 E 670333.7768	89	2.5	N 73668.1374 E 670717.0665
3	4.5	N 736240.8119 E 69675.2072	26	15	N 73632.9912 E 670287.7088	68	2.5	N 73668.1374 E 670717.0665	89	0	N 73668.8770 E 670333.7768	110	0	N 73668.8770 E 670333.7768	90	2.5	N 73668.1374 E 670717.0665
4	4.5	N 736240.7712 E 69675.8355	27	15	N 73632.9912 E 670287.7088	69	2.5	N 73668.1374 E 670717.0665	90	0	N 73668.8770 E 670333.7768	111	0	N 73668.8770 E 670333.7768	91	2.5	N 73668.1374 E 670717.0665
5	3.25	N 736208.2738 E 69675.1382	28	15	N 73632.9912 E 670287.7088	70	2.5	N 73668.1374 E 670717.0665	91	0	N 73668.8770 E 670333.7768	112	0	N 73668.8770 E 670333.7768	92	2.5	N 73668.1374 E 670717.0665
6	3.25	N 736208.2738 E 69675.1382	29	15	N 73632.9912 E 670287.7088	71	2.5	N 73668.1374 E 670717.0665	92	0	N 73668.8770 E 670333.7768	113	0	N 73668.8770 E 670333.7768	93	2.5	N 73668.1374 E 670717.0665
7	3.25	N 736208.2738 E 69675.1382	30	15	N 73632.9912 E 670287.7088	72	2.5	N 73668.1374 E 670717.0665	93	0	N 73668.8770 E 670333.7768	114	0	N 73668.8770 E 670333.7768	94	2.5	N 73668.1374 E 670717.0665
8	3.25	N 736208.2738 E 69675.1382	31	15	N 73632.9912 E 670287.7088	73	2.5	N 73668.1374 E 670717.0665	94	0	N 73668.8770 E 670333.7768	115	0	N 73668.8770 E 670333.7768	95	2.5	N 73668.1374 E 670717.0665
9	3.25	N 736208.2738 E 69675.1382	32	15	N 73632.9912 E 670287.7088	74	2.5	N 73668.1374 E 670717.0665	95	0	N 73668.8770 E 670333.7768	116	0	N 73668.8770 E 670333.7768	96	2.5	N 73668.1374 E 670717.0665
10	3.25	N 736208.2738 E 69675.1382	33	15	N 73632.9912 E 670287.7088	75	2.5	N 73668.1374 E 670717.0665	96	0	N 73668.8770 E 670333.7768	117	0	N 73668.8770 E 670333.7768	97	2.5	N 73668.1374 E 670717.0665
11	3.25	N 736208.2738 E 69675.1382	34	15	N 73632.9912 E 670287.7088	76	2.5	N 73668.1374 E 670717.0665	97	0	N 73668.8770 E 670333.7768	118	0	N 73668.8770 E 670333.7768	98	2.5	N 73668.1374 E 670717.0665
12	3.25	N 736208.2738 E 69675.1382	35	15	N 73632.9912 E 670287.7088	77	2.5	N 73668.1374 E 670717.0665	98	0	N 73668.8770 E 670333.7768	119	0	N 73668.8770 E 670333.7768	99	2.5	N 73668.1374 E 670717.0665
13	3.25	N 736208.2738 E 69675.1382	36	15	N 73632.9912 E 670287.7088	78	2.5	N 73668.1374 E 670717.0665	99	0	N 73668.8770 E 670333.7768	120	0	N 73668.8770 E 670333.7768	100	2.5	N 73668.1374 E 670717.0665
14	3.25	N 736208.2738 E 69675.1382	37	15	N 73632.9912 E 670287.7088	79	2.5	N 73668.1374 E 670717.0665	100	0	N 73668.8770 E 670333.7768	121	0	N 73668.8770 E 670333.7768	101	2.5	N 73668.1374 E 670717.0665
15	3.25	N 736208.2738 E 69675.1382	38	15	N 73632.9912 E 670287.7088	80	2.5	N 73668.1374 E 670717.0665	101	0	N 73668.8770 E 670333.7768	122	0	N 73668.8770 E 670333.7768	102	2.5	N 73668.1374 E 670717.0665
16	3.25	N 736208.2738 E 69675.1382	39	15	N 73632.9912 E 670287.7088	81	2.5	N 73668.1374 E 670717.0665	102	0	N 73668.8770 E 670333.7768	123	0	N 73668.8770 E 670333.7768	103	2.5	N 73668.1374 E 670717.0665
17	3.25	N 736208.2738 E 69675.1382	40	15	N 73632.9912 E 670287.7088	82	2.5	N 73668.1374 E 670717.0665	103	0	N 73668.8770 E 670333.7768	124	0	N 73668.8770 E 670333.7768	104	2.5	N 73668.1374 E 670717.0665
18	3.25	N 736208.2738 E 69675.1382	41	15	N 73632.9912 E 670287.7088	83	2.5	N 73668.1374 E 670717.0665	104	0	N 73668.8770 E 670333.7768	125	0	N 73668.8770 E 670333.7768	105	2.5	N 73668.1374 E 670717.0665
19	3.25	N 736208.2738 E 69675.1382	42	15	N 73632.9912 E 670287.7088	84	2.5	N 73668.1374 E 670717.0665	105	0	N 73668.8770 E 670333.7768	126	0	N 73668.8770 E 670333.7768	106	2.5	N 73668.1374 E 670717.0665
20	3.25	N 736208.2738 E 69675.1382	43	15	N 73632.9912 E 670287.7088	85	2.5	N 73668.1374 E 670717.0665	106	0	N 73668.8770 E 670333.7768	127	0	N 73668.8770 E 670333.7768	107	2.5	N 73668.1374 E 670717.0665
21	3.25	N 736208.2738 E 69675.1382	44	15	N 73632.9912 E 670287.7088	86	2.5	N 73668.1374 E 670717.0665	107	0	N 73668.8770 E 670333.7768	128	0	N 73668.8770 E 670333.7768	108	2.5	N 73668.1374 E 670717.0665
22	3.25	N 736208.2738 E 69675.1382															



**ENGINEER'S NOTICE TO CONTRACTOR**  
 THE ENGINEER HAS REVIEWED THE CONTRACT DOCUMENTS AND HAS FOUND THEM TO BE IN SUBSTANTIAL ACCORD WITH THE STANDARD SPECIFICATIONS FOR CONSTRUCTION OF PUBLIC WORKS, SEVENTH EDITION, AS AMENDED, PUBLISHED BY THE ARKANSAS HIGHWAY DEPARTMENT. THE ENGINEER'S REVIEW IS LIMITED TO THE TECHNICAL ASPECTS OF THE CONTRACT DOCUMENTS AND DOES NOT CONSTITUTE A GUARANTEE OF THE ACCURACY OF THE INFORMATION PROVIDED HEREIN. THE CONTRACTOR SHALL BE RESPONSIBLE FOR OBTAINING ALL NECESSARY PERMITS AND FOR THE PROTECTION OF ALL UTILITIES AND STRUCTURES TO REMAIN. THE CONTRACTOR SHALL MAINTAIN ACCESS TO ALL ADJACENT PROPERTIES AT ALL TIMES. THE CONTRACTOR SHALL BE RESPONSIBLE FOR THE PROTECTION OF ALL ADJACENT PROPERTIES AND UTILITIES. THE CONTRACTOR SHALL MAINTAIN ACCESS TO ALL ADJACENT PROPERTIES AT ALL TIMES.

**SAFETY NOTICE TO CONTRACTOR**  
 THE CONTRACTOR SHALL BE RESPONSIBLE FOR THE PROTECTION OF ALL ADJACENT PROPERTIES AND UTILITIES. THE CONTRACTOR SHALL MAINTAIN ACCESS TO ALL ADJACENT PROPERTIES AT ALL TIMES.

**ASSIGNMENT OF DOCUMENTS**  
 THE CONTRACTOR HAS REVIEWED THE CONTRACT DOCUMENTS AND HAS FOUND THEM TO BE IN SUBSTANTIAL ACCORD WITH THE STANDARD SPECIFICATIONS FOR CONSTRUCTION OF PUBLIC WORKS, SEVENTH EDITION, AS AMENDED, PUBLISHED BY THE ARKANSAS HIGHWAY DEPARTMENT. THE CONTRACTOR'S REVIEW IS LIMITED TO THE TECHNICAL ASPECTS OF THE CONTRACT DOCUMENTS AND DOES NOT CONSTITUTE A GUARANTEE OF THE ACCURACY OF THE INFORMATION PROVIDED HEREIN. THE CONTRACTOR SHALL BE RESPONSIBLE FOR OBTAINING ALL NECESSARY PERMITS AND FOR THE PROTECTION OF ALL UTILITIES AND STRUCTURES TO REMAIN. THE CONTRACTOR SHALL MAINTAIN ACCESS TO ALL ADJACENT PROPERTIES AT ALL TIMES.



**Crafton, Tull & Associates, Inc.**  
 Architects & Engineers  
 Rogers, Arkansas 72758  
 2100 N. Coffey, Ltd. & Associates, Inc.

SITE PLAN



300 N. 46th ST.  
 ROGERS, ARKANSAS

Scale: 1/8" = 1'-0"

Drawn by: E.C.H.  
 Checked by: T.C.A.  
 Date: 10/27/94  
 Sheet Number: 2.1