

10.77 ACRES
FOR SALE

SALES CONTACT
NICK ALTOMARE
210.408.6468
NAltomare@theretailconnection.net

MANAGING BROKER
TED GILDEA
617.369.5914
tgildea@atlanticretail.com

PROJECT HIGHLIGHTS

- Approximately 10.77 acres
- Zoning: Commercial
- Adjoins Lowe's at the Dominant intersection of University & McColl
- Nearby to UTRGV with 32,000 students and Edinburg City Hall
- Area Retailers include Walmart, Starbucks & HEB



DEMOGRAPHICS



TOTAL HOUSEHOLDS

3 MILES	5 MILES	7 MILES
27,075	58,118	95,284



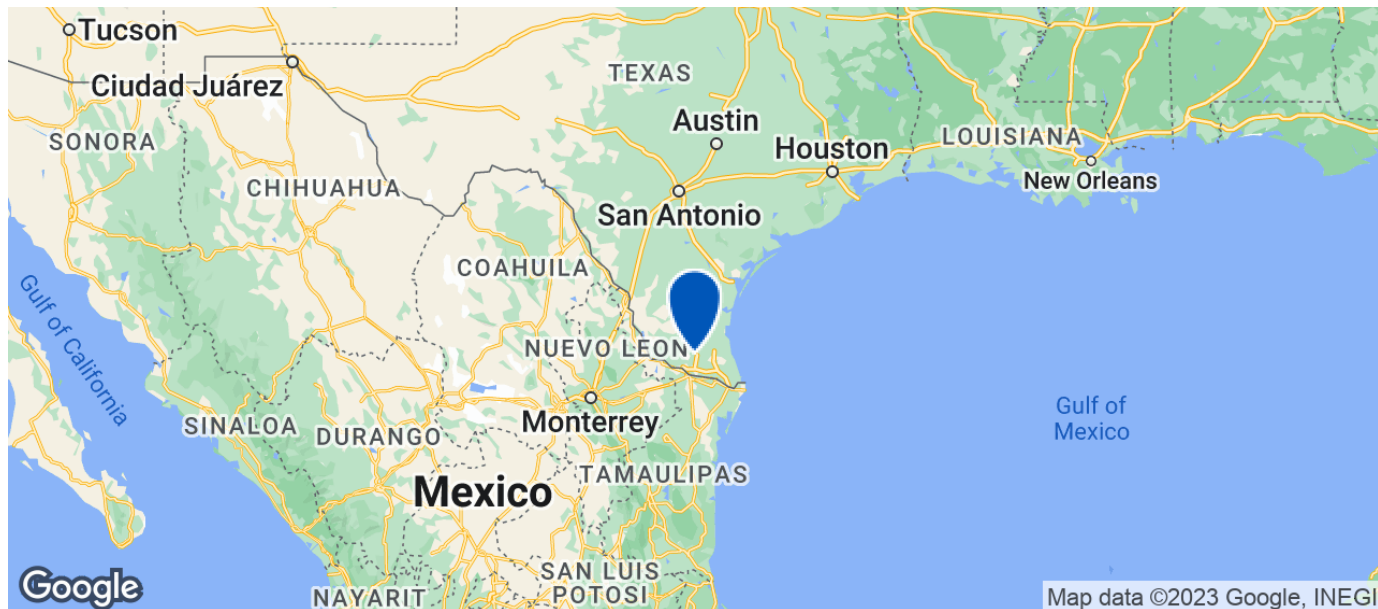
TOTAL POPULATION

3 MILES	5 MILES	7 MILES
79,228	173,797	294,634



AVERAGE INCOME

3 MILES	5 MILES	7 MILES
\$80,132	\$82,690	\$76,254



10.77 ACRES
FOR SALE

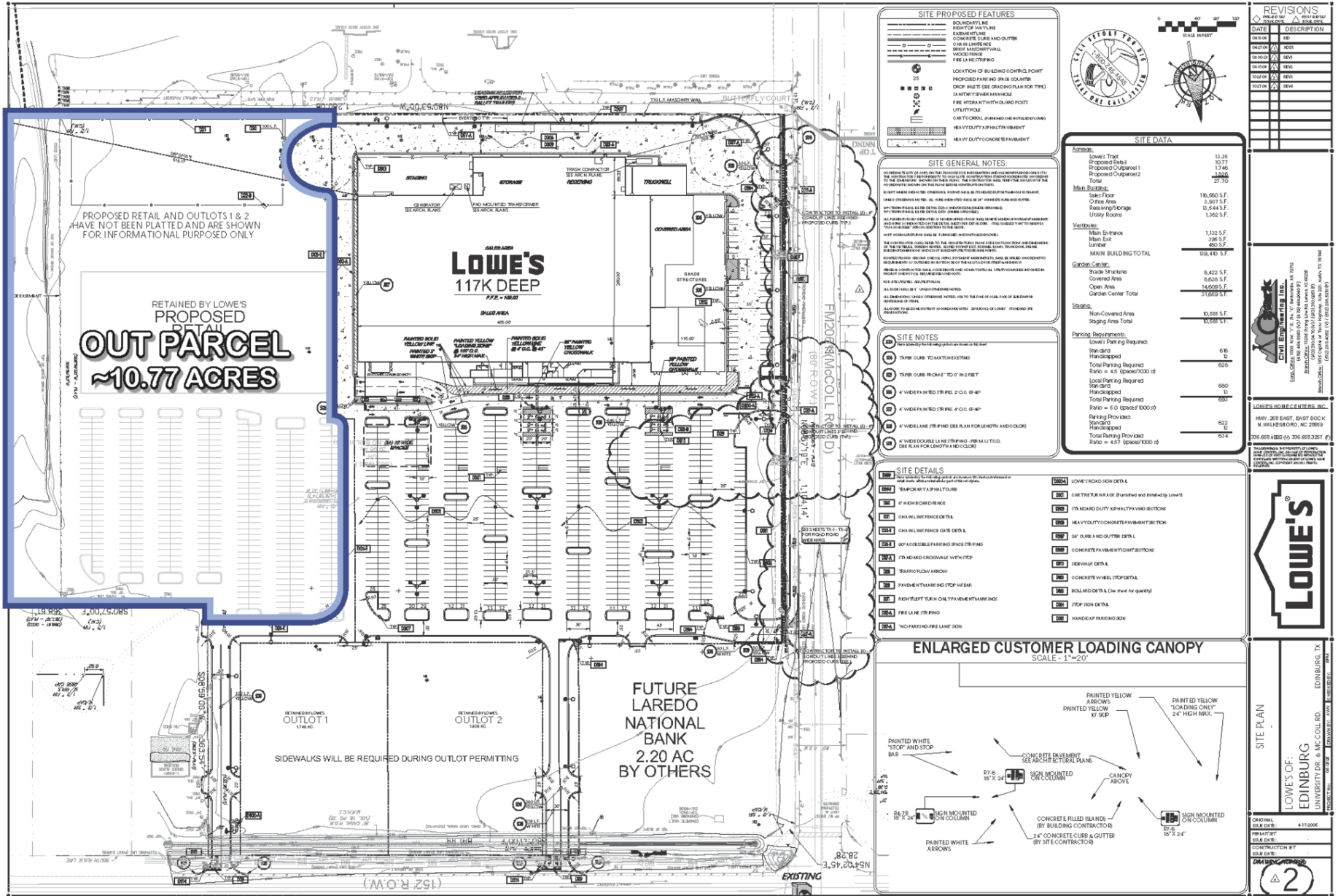
SALES CONTACT

NICK ALTOMARE
210.408.6468
NAltomare@theretailconnection.net

MANAGING BROKER

TED GILDEA
617.369.5914
tgildea@atlanticretail.com





10.77 ACRES
FOR SALE

SALES CONTACT
NICK ALTOMARE
210.408.6468
NAltomare@theretailconnection.net

MANAGING BROKER
TED Gildea
617.369.5914
tgildea@atlanticretail.com