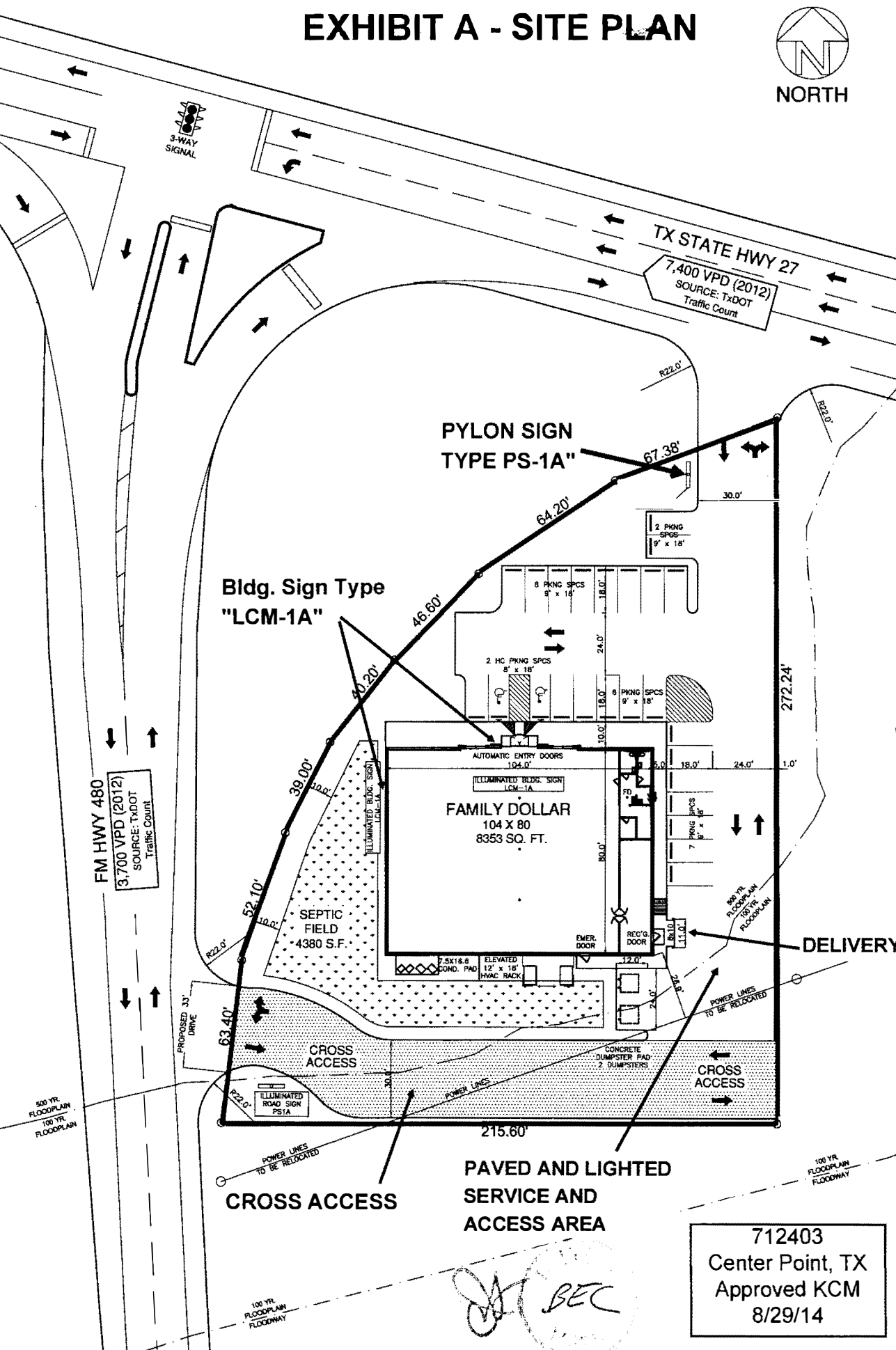


EXHIBIT A - SITE PLAN



NORTH



FM HWY 480
3,700 VPD (2012)
SOURCE: TXDOT
Traffic Count

TX STATE HWY 27
7,400 VPD (2012)
SOURCE: TXDOT
Traffic Count

PYLON SIGN
TYPE PS-1A"

Bldg. Sign Type
"LCM-1A"

FAMILY DOLLAR
104 X 80
8353 SQ. FT.

SEPTIC FIELD
4380 S.F.

DELIVERY

CROSS ACCESS

PAVED AND LIGHTED
SERVICE AND
ACCESS AREA

712403
Center Point, TX
Approved KCM
8/29/14

Handwritten signature and initials: BEC