



2715 Elm Street

Details:

Size:

1st Floor: 2,392 SF

Rooftop Patio: 3,284 SF

Lease Rates: Please call

NNN: \$10.00 PSF

Traffic Counts:

Elm Street: 7,519 VPD

N. Good Latimer Expressway:

10,750 VPD



Rare opportunity for an iconic 2nd generation bar/restaurant space in Deep Ellum. One of the best rooftop patios in the trade area. Prime location on Elm Street, which is one of the major thoroughfares in Deep Ellum.

2715 Elm Street

Demographics and Area Retailers

3-Mile Radius:



372,987
Population



173,541
Households



544,296
Daytime Population



\$122,238
Average HHI



34.8
Median Age



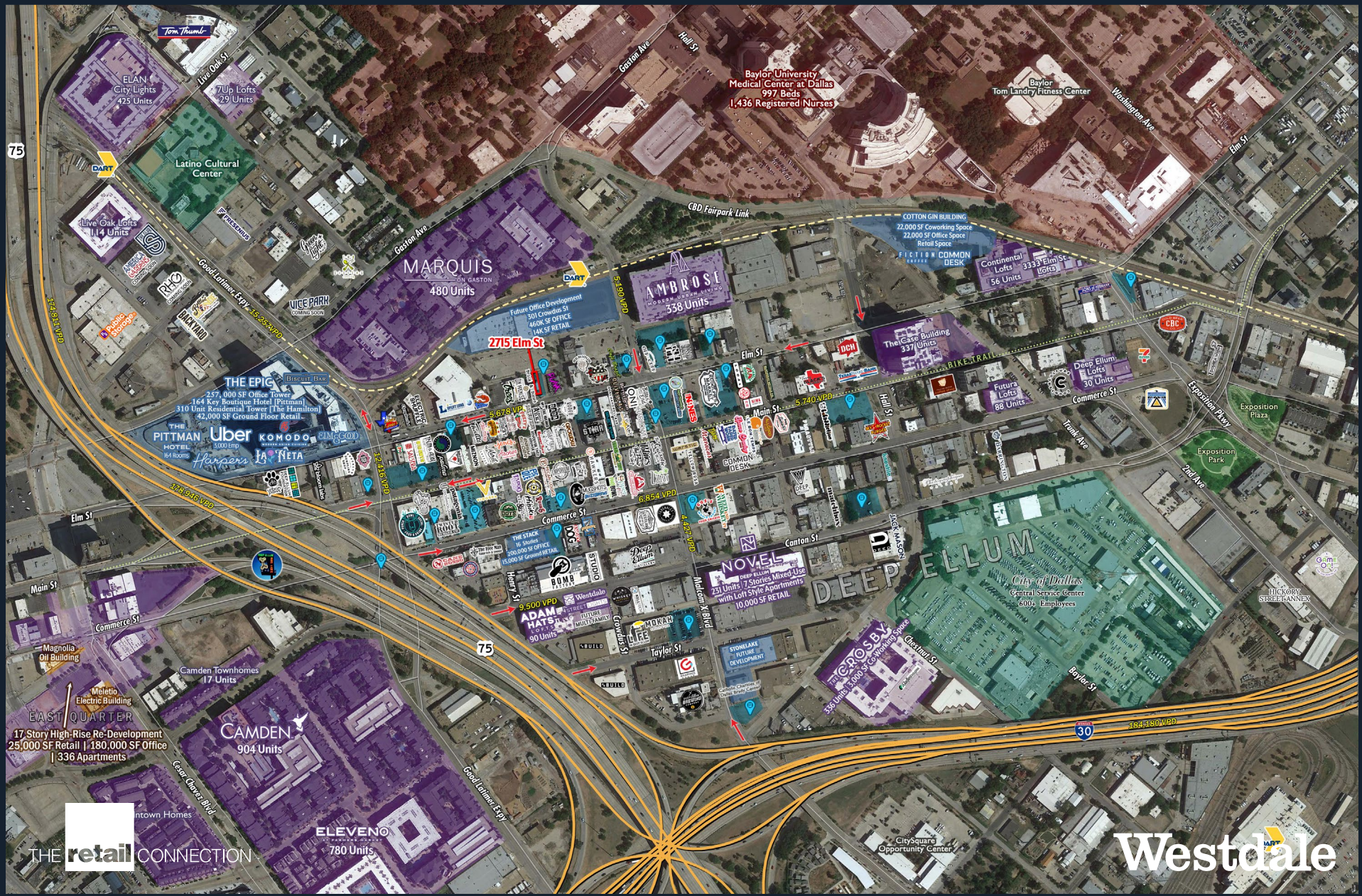
32.0%
College Educated

Area Retailers:



2715 Elm Street

Trade Area Aerial



2715 Elm Street

Oblique Aerial



THE retail CONNECTION

Westdale

2715 Elm Street

Zoom Aerial



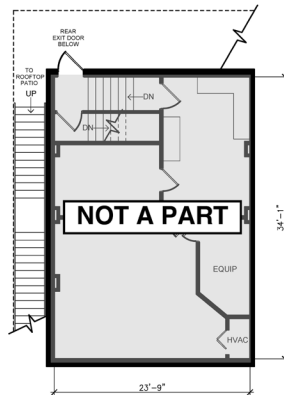
2715 Elm Street

Lease Outline Drawing

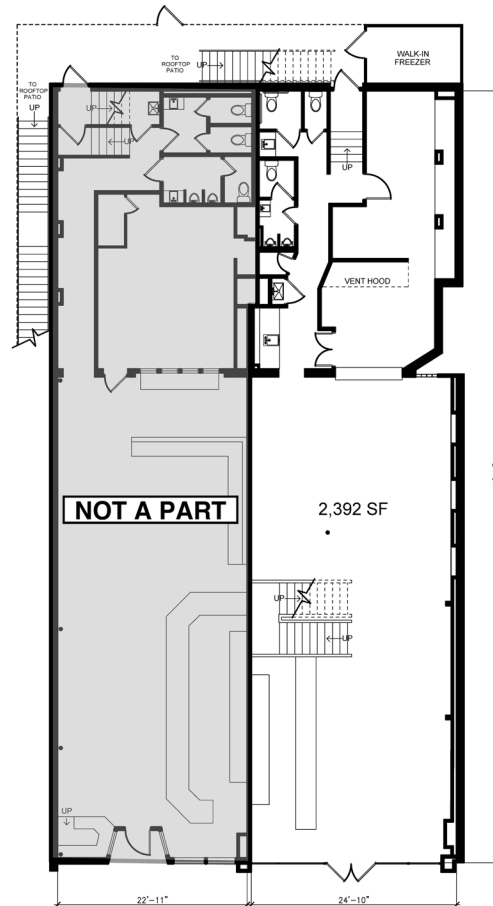


2713&2715 ELM STREET

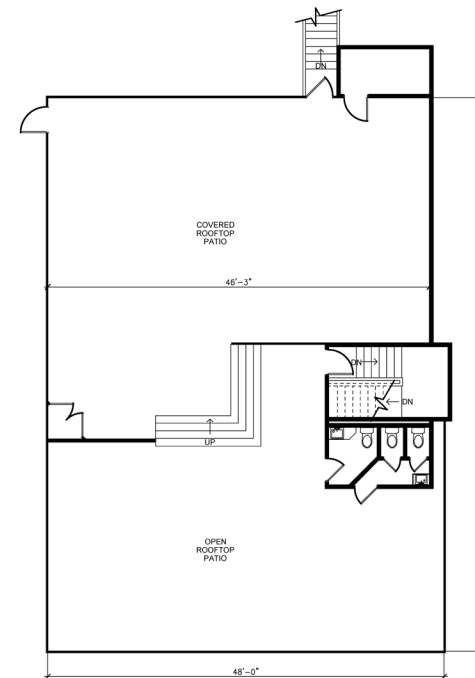
DALLAS, TX



② SECOND FLOOR
DIMENSIONS ARE APPROXIMATE
903 SF



① FIRST FLOOR
DIMENSIONS ARE APPROXIMATE
4,695 SF



③ ROOFTOP PATIO
DIMENSIONS ARE APPROXIMATE
3,284 SF

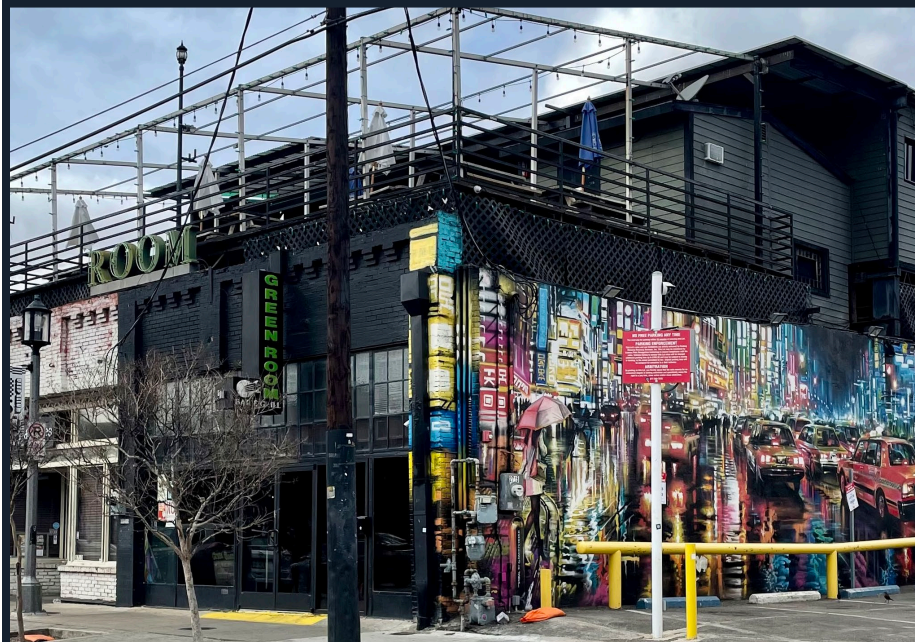


TRUE NORTH
02-08-23

INTERPRISE

2715 Elm Street

Additional Images



THE retail CONNECTION

Leasing Information

Shelley Taylor

214.572.8423

staylor@theretailconnection.net

