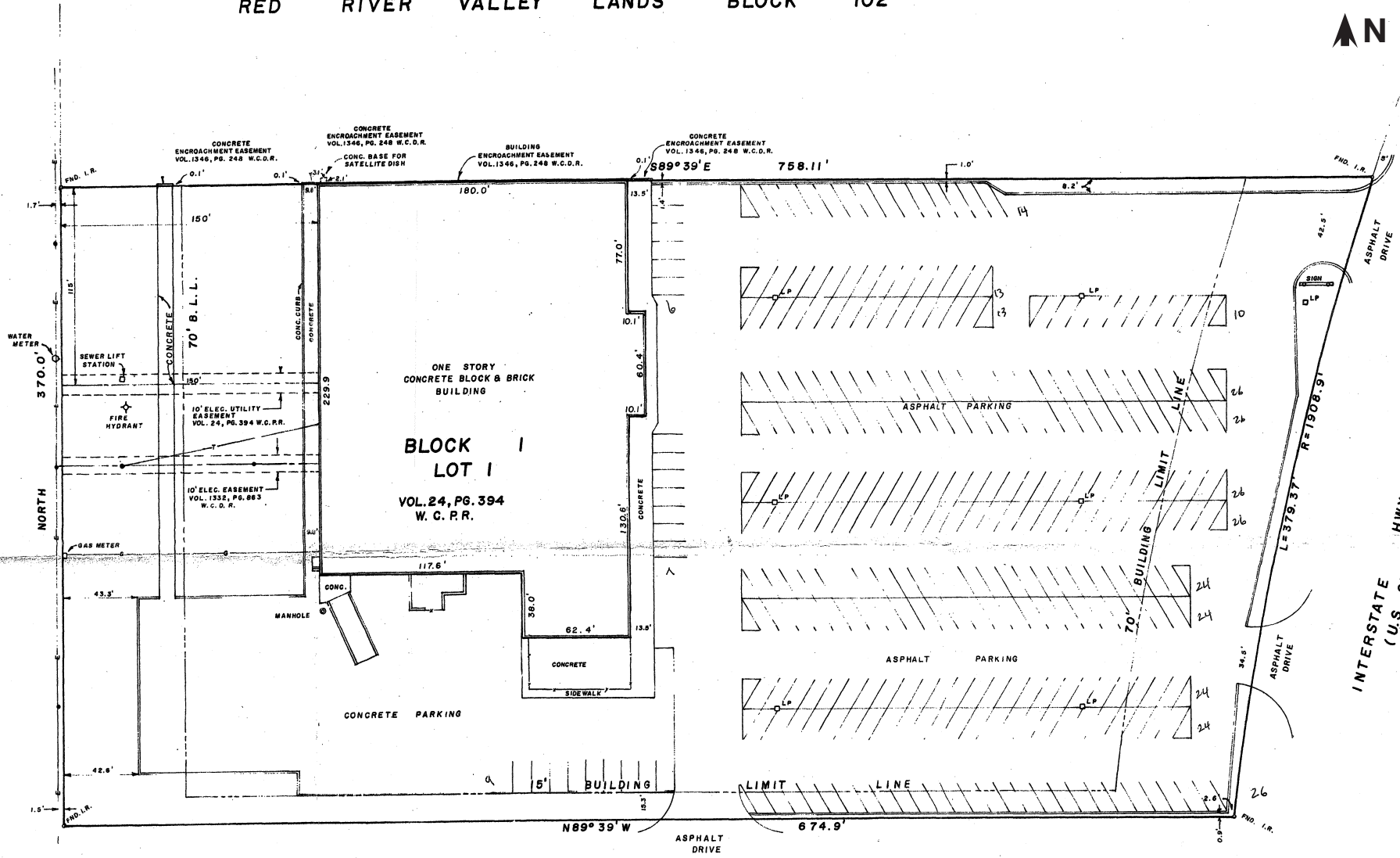


RED RIVER VALLEY LANDS BLOCK 102



STATE HWY. NO. 240 (120' R.O.W.) (BERRY STREET)



BLOCK LOT 1
VOL. 24, PG. 394
W. C. P. R.

ONE STORY
CONCRETE BLOCK & BRICK
BUILDING

CONCRETE PARKING

ASPHALT PARKING

ASPHALT PARKING

SPUR NO. 383 (80' R.O.W.) (GLENDALE STREET)

INTERSTATE HWY. 44
(U.S. 277-291)

288