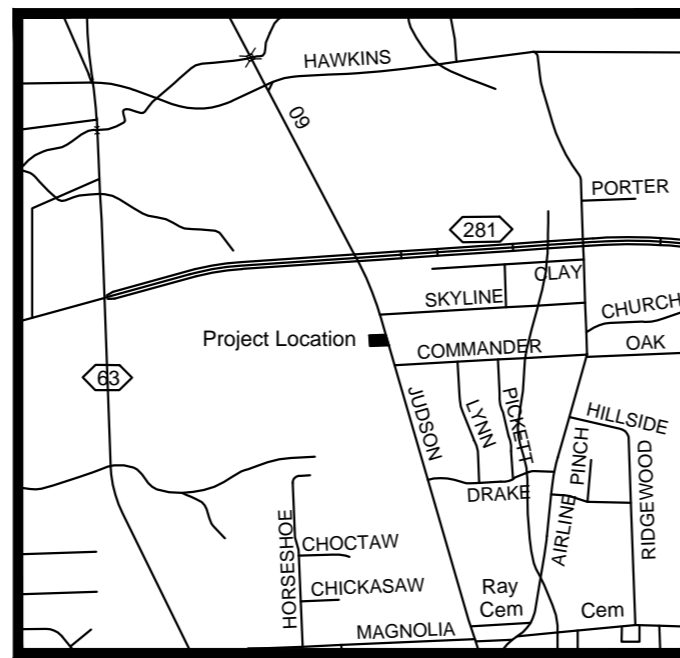


**LEGEND**

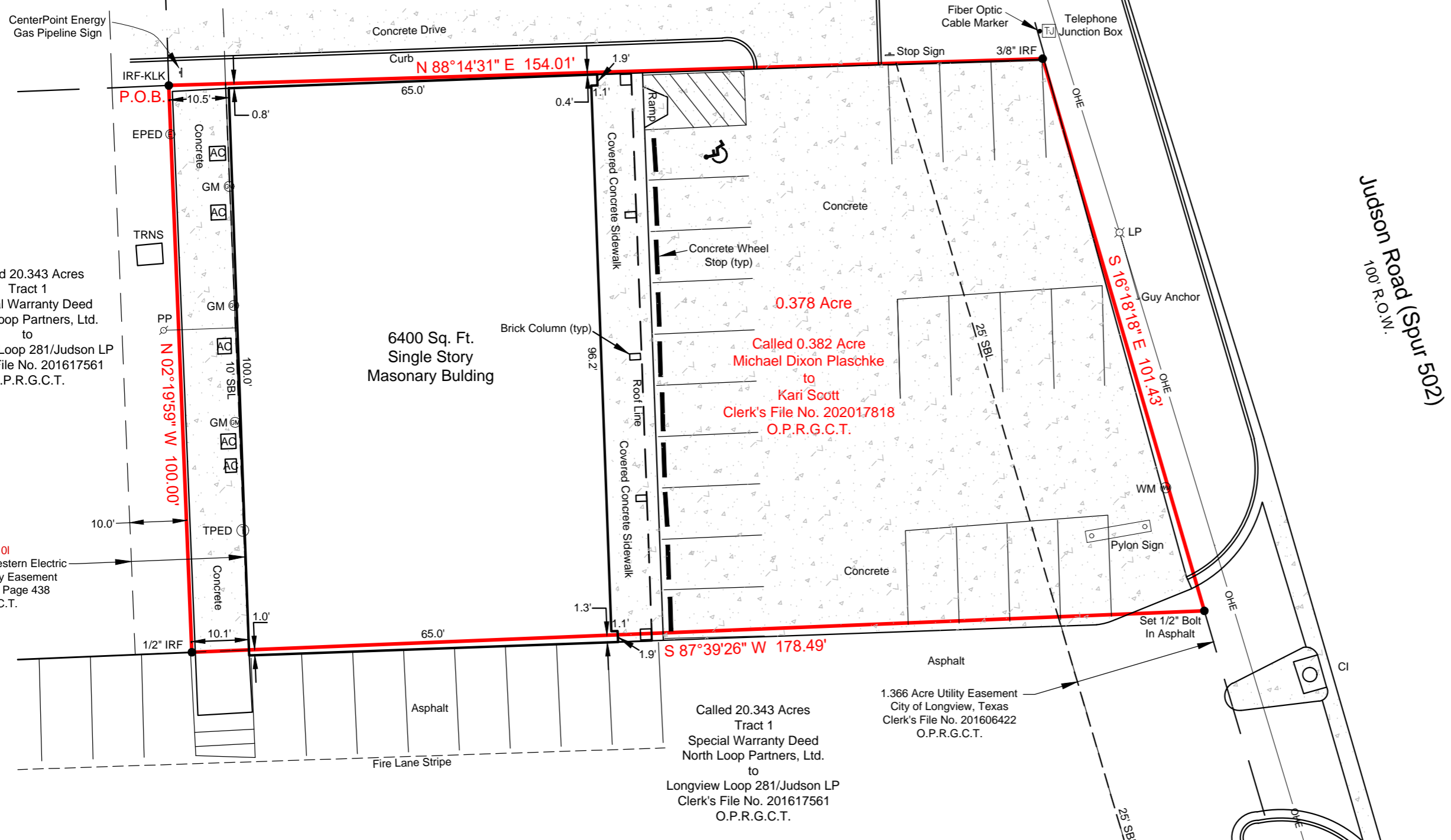
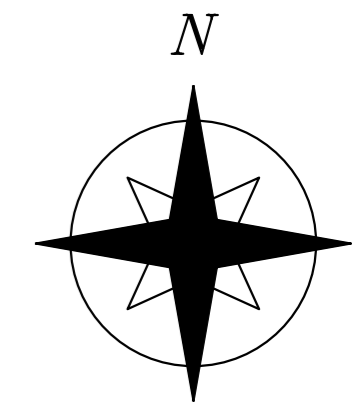
These standard abbreviations will be found in the drawing.

- AC AIR CONDITIONING UNIT
- CI CURB INLET
- EPED ELECTRIC PEDESTAL
- GM GAS METER
- IRF 1/2" IRON ROD FOUND
- IRF-KLK 1/2" IRON ROD FOUND WITH CAP STAMPED KLK # 4686
- JBT JUNCTION BOX TELEPHONE
- LP LIGHT POLE
- OHE OVERHEAD ELECTRIC
- PP POWER POLE
- TPED TELEPHONE PEDESTAL
- TRNS ELECTRIC TRANSFORMER
- WM WATER METER



Vicinity Map  
N.T.S.

Southern Multifoods, Inc.  
Lot 1, Block 1  
Taco Bell Addition - Judson  
Cabinet C, Page 320  
P.R.G.C.T.



Called 20.343 Acres  
Tract 1  
Special Warranty Deed  
North Loop Partners, Ltd.  
to  
Longview Loop 281/Judson LP  
Clerk's File No. 201617561  
O.P.R.G.C.T.

Item 101  
Wide Southwestern Electric  
Power Company Easement  
Volume 1486, Page 438  
D.R.G.C.T.

Called 20.343 Acres  
Tract 1  
Special Warranty Deed  
North Loop Partners, Ltd.  
to  
Longview Loop 281/Judson LP  
Clerk's File No. 201617561  
O.P.R.G.C.T.

1.366 Acre Utility Easement  
City of Longview, Texas  
Clerk's File No. 201606422  
O.P.R.G.C.T.

Judson Road (Spur 502)  
100' R.O.W.

Skyline Drive