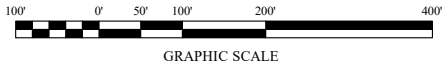
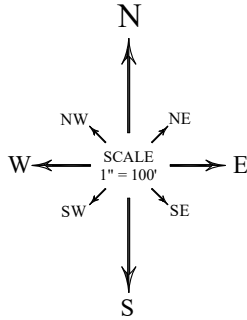


AMENDING PLAT OF LOT 2A, LITTLE ELM SUBDIVISION

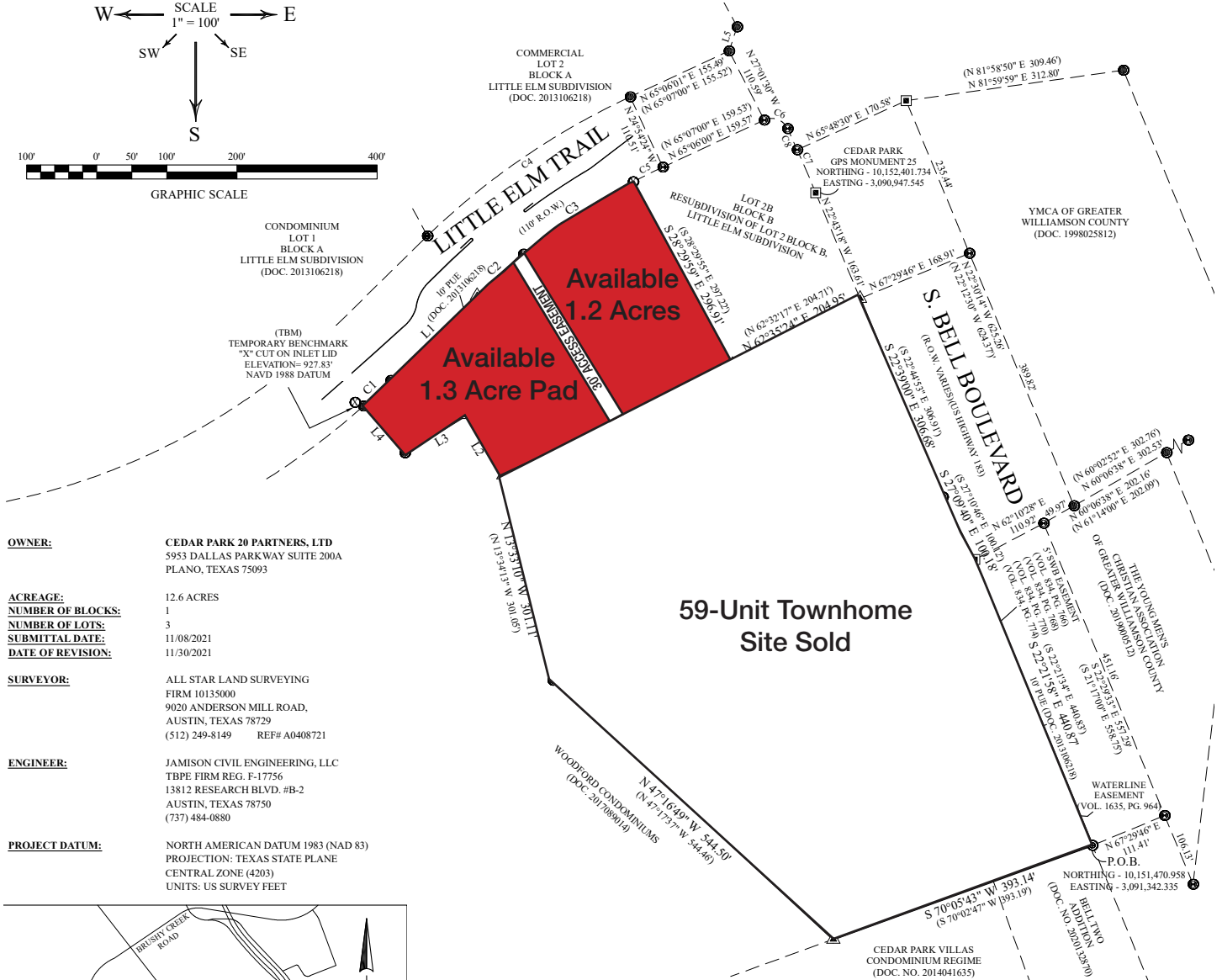
LEGEND

- ⊙ 1/2" ROD FOUND
- ⊙ CALCULATED POINT
- ⊙ 1/2" IRON PIPE FOUND
- ⊙ "X" SCRIBE FOUND IN CONC.
- ⊙ 60D NAIL FOUND
- ⊙ 60D NAIL SET
- ⊙ CONCRETE MONUMENT FOUND
- AE ACCESS ESMT
- DE DRAINAGE ESMT
- EE ELECTRIC ESMT
- LE LANDSCAPE ESMT
- RE ROADWAY EASEMENT
- PAE PEDESTRIAN ACCESS ESMT
- PDE PRIVATE DRAINAGE ESMT
- PUE PUBLIC UTILITY ESMT
- SSE SANITARY SEWER ESMT
- SWB SOUTH WESTERN BELL
- WE WATER LINE ESMT
- () RECORD INFORMATION

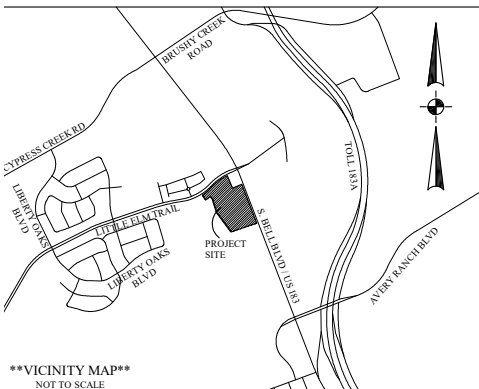


BEARING BASIS:
BEARINGS ARE GRID NORTH BASED ON THE TEXAS COORDINATE SYSTEM
CENTRAL TEXAS ZONE (4203) NAD83 HARN HORIZONTAL CONTROL.

BUILDING SETBACKS NOT SHOWN ON LOTS SHALL CONFORM TO THE
CITY OF CEDAR PARK ZONING ORDINANCE.



- OWNER:** CEDAR PARK 20 PARTNERS, LTD
5953 DALLAS PARKWAY SUITE 200A
PLANO, TEXAS 75093
- ACREAGE:** 12.6 ACRES
- NUMBER OF BLOCKS:** 1
- NUMBER OF LOTS:** 3
- SUBMITTAL DATE:** 11/08/2021
- DATE OF REVISION:** 11/30/2021
- SURVEYOR:** ALL STAR LAND SURVEYING
FIRM 10135000
9020 ANDERSON MILL ROAD,
AUSTIN, TEXAS 78729
(512) 249-8149 REF# A0408721
- ENGINEER:** JAMISON CIVIL ENGINEERING, LLC
TBPE FIRM REG. F-17756
13812 RESEARCH BLVD. #B-2
AUSTIN, TEXAS 78750
(737) 484-0880
- PROJECT DATUM:** NORTH AMERICAN DATUM 1983 (NAD 83)
PROJECTION: TEXAS STATE PLANE
CENTRAL ZONE (4203)
UNITS: US SURVEY FEET



LINE	BEARING	DISTANCE
L1	N 45°30'32" E	172.52'
(L1)	(N 45°29'09" E)	(172.55')
L2	N 30°49'47" W	100.17'
(L2)	(N 30°54'52" W)	(100.17')
L3	S 58°38'14" W	104.45'
(L3)	(S 58°46'47" W)	(104.45')
L4	N 41°36'13" W	89.21'
(L4)	(N 41°36'32" W)	(89.24')
L5	N 18°34'49" E	36.27'
(L5)	(N 18°34'26" E)	(36.29')

CURVE	RADIUS	CHORD LENGTH	CHORD BEARING	ARC LENGTH	CURVE	RADIUS	CHORD LENGTH	CHORD BEARING	ARC LENGTH
C1	1055.00'	53.46'	N 46°52'28" E	53.47'	C5	945.27'	47.17'	N 63°42'47" E	47.18'
(C1)	(1055.00')	(53.49')	(N 46°56'19" E)	(53.50')	C6	25.00'	35.43'	S 69°47'40" E	39.38'
C2	945.00'	88.79'	N 48°12'55" E	88.83'	(C6)	(25.00')	(35.42')	(S 69°46'40" E)	(39.36')
C3	945.00'	187.46'	N 56°36'00" E	187.77'	C7	2806.93'	99.93'	S 23°40'47" E	99.93'
C4	1055.00'	350.77'	S 55°34'15" W	352.41'	(C7)	(2806.93')	(99.90')	(S 23°39'47" E)	(99.91')
(C4)	(1055.00')	(350.83')	(S 55°32'44" W)	(352.47')	C8	2806.93'	33.11'	S 24°21'42" E	33.11'