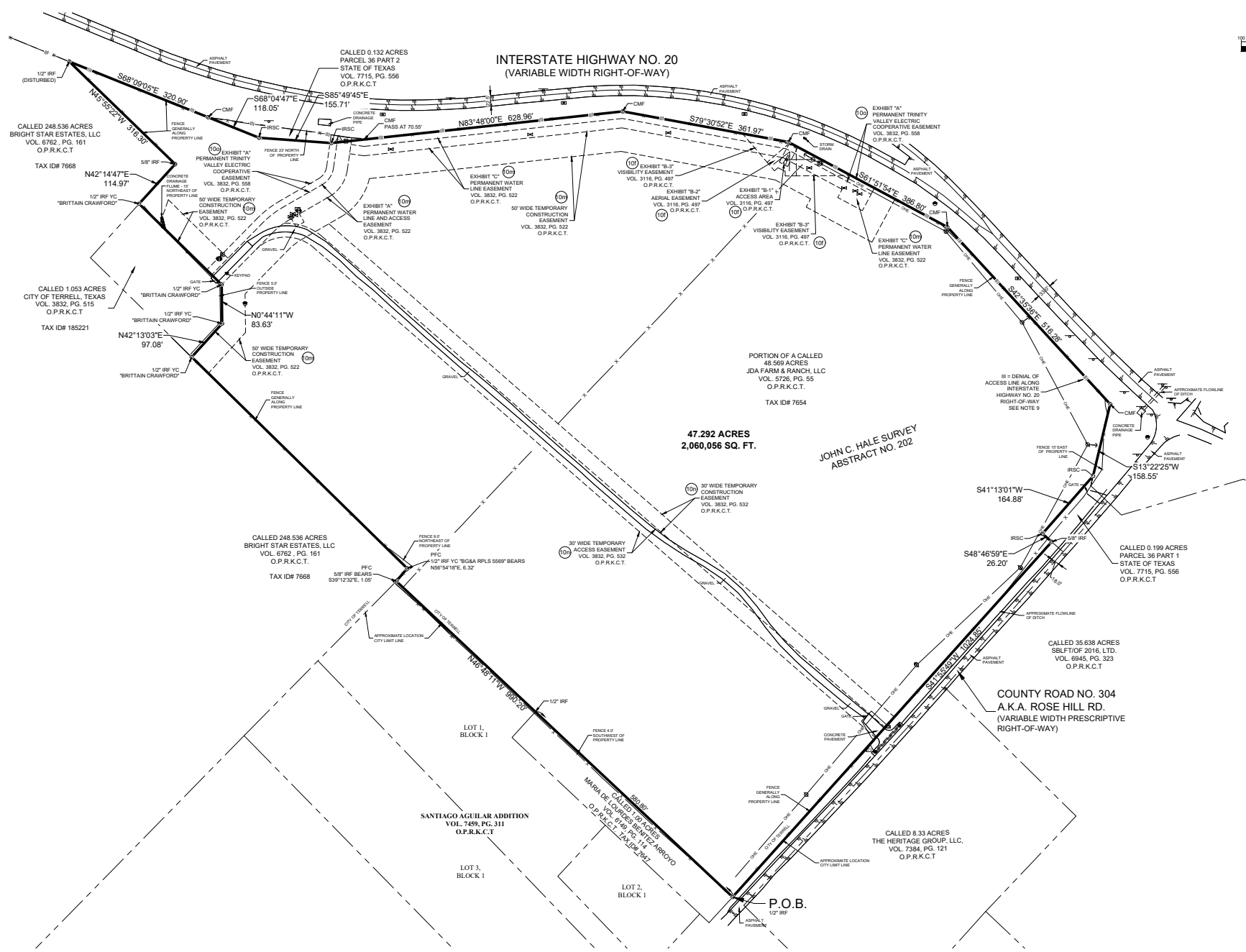


**INTERSTATE HIGHWAY NO. 20
(VARIABLE WIDTH RIGHT-OF-WAY)**



**47.292 ACRES
2,060,056 SQ. FT.**

**JOHN C. HALE SURVEY
ABSTRACT NO. 202**

**PORTION OF A CALLED
48.569 ACRES
JDA FARM & RANCH, LLC
VOL. 5726, PG. 55
O.P.R.K.C.T.
TAX ID# 7654**

**COUNTY ROAD NO. 304
A.K.A. ROSE HILL RD.
(VARIABLE WIDTH PRESCRIPTIVE
RIGHT-OF-WAY)**

**CALLLED 8.33 ACRES
THE HERITAGE GROUP, LLC,
VOL. 7364, PG. 121
O.P.R.K.C.T.**

P.O.B.

**SANTIAGO AGUILAR ADDITION
VOL. 7459, PG. 311
O.P.R.K.C.T.**

**LOT 1,
BLOCK 1**

**LOT 3,
BLOCK 1**

**LOT 2,
BLOCK 1**

**CALLLED 0.199 ACRES
PARCEL 36 PART 1
STATE OF TEXAS
VOL. 7715, PG. 556
O.P.R.K.C.T.**

**CALLLED 35.638 ACRES
SBLF/T/O/F 2016, LTD.
VOL. 6945, PG. 323
O.P.R.K.C.T.**

**CALLLED 248.536 ACRES
BRIGHT STAR ESTATES, LLC
VOL. 6762, PG. 161
O.P.R.K.C.T.
TAX ID# 7668**

**CALLLED 248.536 ACRES
BRIGHT STAR ESTATES, LLC
VOL. 6762, PG. 161
O.P.R.K.C.T.
TAX ID# 7668**

**CALLLED 1.053 ACRES
CITY OF TERRELL, TEXAS
VOL. 3832, PG. 515
O.P.R.K.C.T.
TAX ID# 185221**