



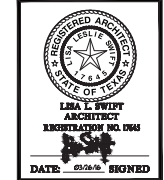
GOMBZ • SWIFT • O'BRIEN  
 5310 HARVEST HILL ROAD  
 SUITE 226, LB 156  
 DALLAS, TEXAS 75230  
 (972) 388-8083  
 FAX: 972 388-5482  
 www.GSOarchitects.com

METHODIST  
 URGENT CARE  
 1718 US HWY 287  
 MANSFIELD, TEXAS

**ISSUE LOG**

NO.	DESCRIPTION	DATE
1	ISSUE FOR BID # PERIT	03/24/16

COPYRIGHT © 2016 GSO ARCHITECTS, INC. ALL RIGHTS RESERVED. NO PART OF THIS DOCUMENT MAY BE REPRODUCED OR TRANSMITTED IN ANY FORM, BY ANY METHOD, FOR ANY PURPOSES WITHOUT PRIOR WRITTEN CONSENT FROM GSO ARCHITECTS, INC.



JOB NO. : 15-127  
 DATE: XX/XX/XX  
 SCALE: AS NOTED

**SHEET NO.**  
**A3.1**  
 FLOOR PLAN AND WALL TYPES

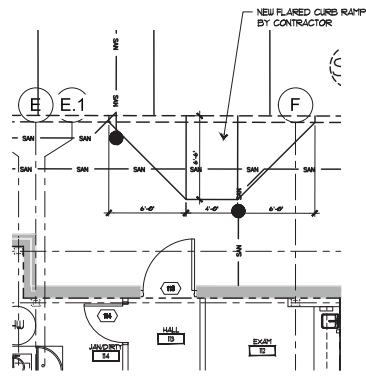
**GENERAL NOTES**

-CONTRACTOR SHALL BE RESPONSIBLE FOR ANY DAMAGE TO FINISHES OR COMPONENTS NOT SCHEDULED FOR DESTRUCTION. DAMAGED ITEMS SHALL BE REPLACED OR REPAIRED TO MEET OR EXCEED FORMER CONDITIONS. THE RENOVATION, RESTORATION, AND/OR NEW CONSTRUCTION SHALL UTILIZE AS MUCH OF THE EXISTING AS POSSIBLE.  
 -CONTRACTOR SHALL REMOVE TRASH FROM THE SITE AND LEAVE THE SPACE IN BRUSH-CLEARED CONDITION DAILY. DURING THE DESTRUCTION PHASE, A REASONABLE CLEAN UP IS TO BE MAINTAINED.  
 -CONTRACTOR SHALL EXERCISE CARE IN REMOVAL OF ANY COMPONENTS (E.G. DOORS, FRAMES, CEILING TILES) WHICH MAY BE REUSED ON THIS OR FUTURE PROJECTS. CONTRACTOR SHALL COORDINATE APPROPRIATE STORAGE LOCATIONS FOR SUCH COMPONENTS DIRECTLY WITH THE LANDLORD.

**KEY NOTES:**

- ① REFER TO PHYSICIST REPORT AT XRAY 150
- ② WATER SHUT OFF, REFER TO MEP
- ③ NURSES CALL SYSTEM, REFER TO MEP
- ④ FINISH NEW STOREFRONT TO MATCHING EXISTING BUILDING, REFER TO DEMO PLAN AND DOOR SCHEDULE
- ⑤ HAND DRYER, XCELERATOR WITH ADA RECESSED KIT, REFER TO MEP
- ⑥ BABY CHANGING TABLE, RECESSED, ADA COMPLIANT, BODEROCK KEND-SORE
- ⑦ TOILET TABLE DISPENSER BMST.
- ⑧ ABANDON EXISTING DOOR, REMOVE HARDWARE, PATCH ALL OPENINGS WELD CLOSED, PROVIDE METAL STUDS AND COLUMNS AT INTERIOR, REFER TO DEMO PLAN

⊠ WALL TYPE



**02 NEW CURB RAMP**  
 1/4"=1'-0"

