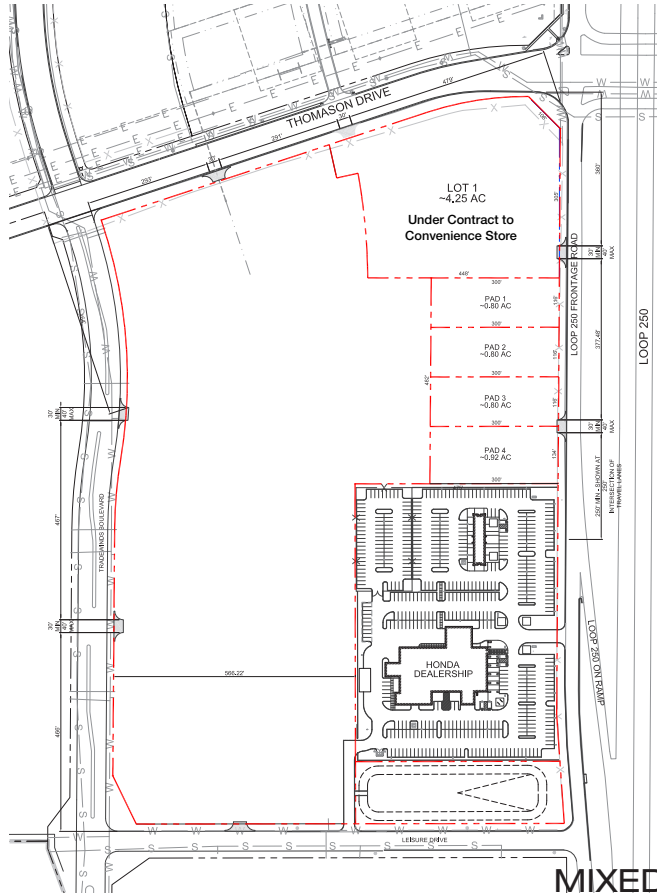


# WESTRIDGE VILLAGE—PAD SITES AVAILABLE FOR SALE, GROUND LEASE OR BTS

MIDLAND, TX | SWQ LOOP 250 AND THOMASON DRIVE



RAW LAND  
MIXED-USE DEVELOPMENT

Midland: Located in the western part of Texas; 314 miles west of DFW and 259 miles east of El Paso. Its economy is predominately driven by crude oil and natural gas production.

DEMOGRAPHICS:	5 MILE	10 MILE	15 MILE	20 MILE	MSA
2023 Population	114,159	174,602	249,668	317,105	185,203
2023 Total Households	42,084	63,319	90,478	113,802	66,636
2023 Average HH Income	\$116,009	\$116,717	\$109,906	\$102,199	\$116,510
2023 Median HH Income	\$84,804	\$84,487	\$79,290	\$71,505	\$84,593

TRAFFIC COUNTS:  
Loop 250: 35,864 VPD

AVAILABILITY:  
+/- 19 ACRES [WILL SUBDIVIDE]

LOOP 250 FRONTAGE:  
APPROXIMATELY 482'

PAD SITES | LAND FOR SALE

TRAFFIC GENERATORS:

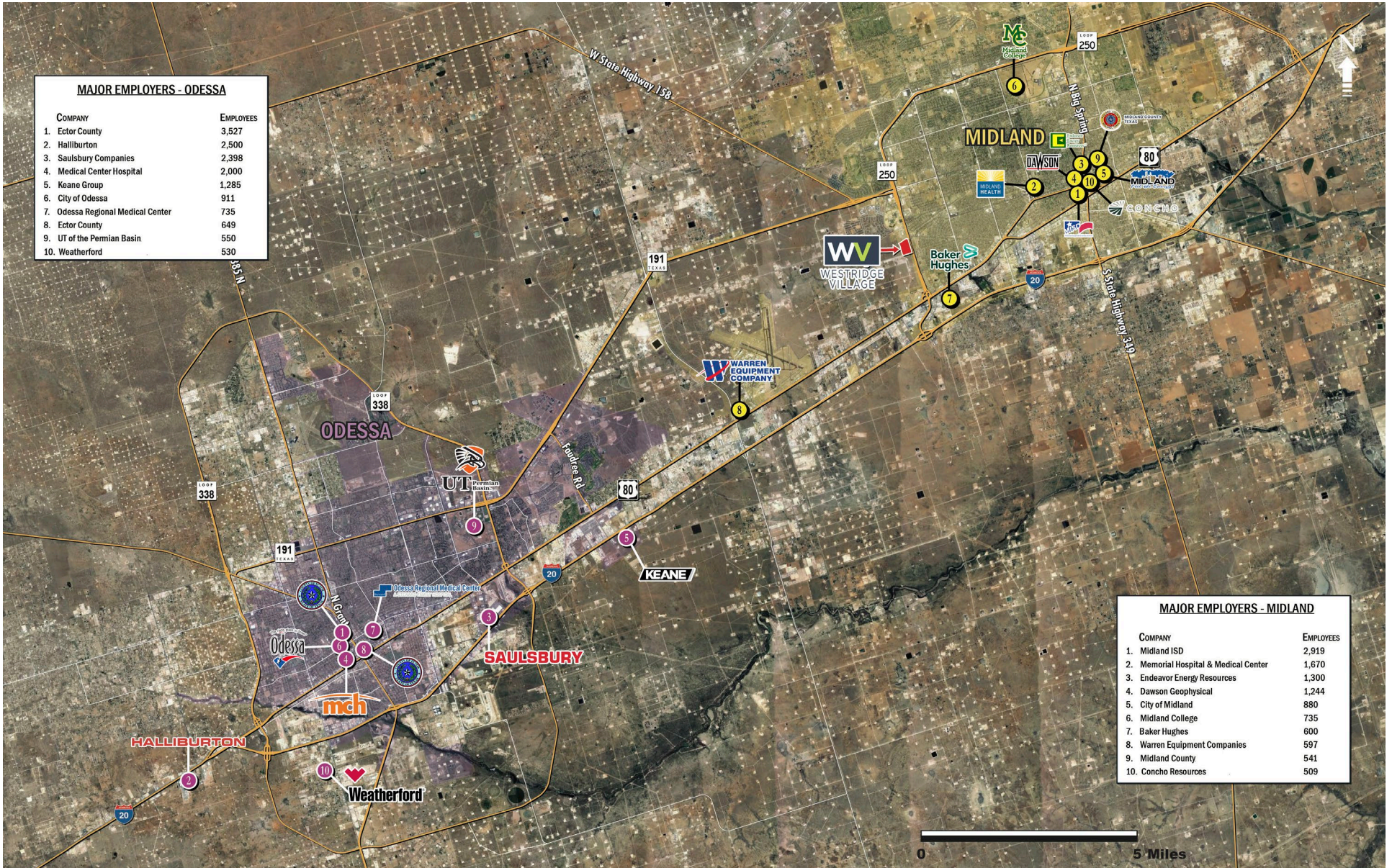


FOR MORE INFORMATION, PLEASE CONTACT:

STEVE GREENBERG  
214.236.9501  
sgreenberg@theretailconnection.net

# WESTRIDGE VILLAGE—PAD SITES AVAILABLE FOR SALE, GROUND LEASE OR BTS

MIDLAND, TX | SWQ LOOP 250 AND THOMASON DRIVE



**MAJOR EMPLOYERS - ODESSA**

COMPANY	EMPLOYEES
1. Ector County	3,527
2. Halliburton	2,500
3. Salsbury Companies	2,398
4. Medical Center Hospital	2,000
5. Keane Group	1,285
6. City of Odessa	911
7. Odessa Regional Medical Center	735
8. Ector County	649
9. UT of the Permian Basin	550
10. Weatherford	530

**MAJOR EMPLOYERS - MIDLAND**

COMPANY	EMPLOYEES
1. Midland ISD	2,919
2. Memorial Hospital & Medical Center	1,670
3. Endeavor Energy Resources	1,300
4. Dawson Geophysical	1,244
5. City of Midland	880
6. Midland College	735
7. Baker Hughes	600
8. Warren Equipment Companies	597
9. Midland County	541
10. Concho Resources	509



FOR MORE INFORMATION, PLEASE CONTACT:

**STEVE GREENBERG**  
 214.236.9501  
 sgreenberg@theretailconnection.net

# WESTRIDGE VILLAGE—PAD SITES AVAILABLE FOR SALE, GROUND LEASE OR BTS

MIDLAND, TX | SWQ LOOP 250 AND THOMASON DRIVE



# WESTRIDGE VILLAGE—PAD SITES AVAILABLE FOR SALE, GROUND LEASE OR BTS

MIDLAND, TX | SWQ LOOP 250 AND THOMASON DRIVE

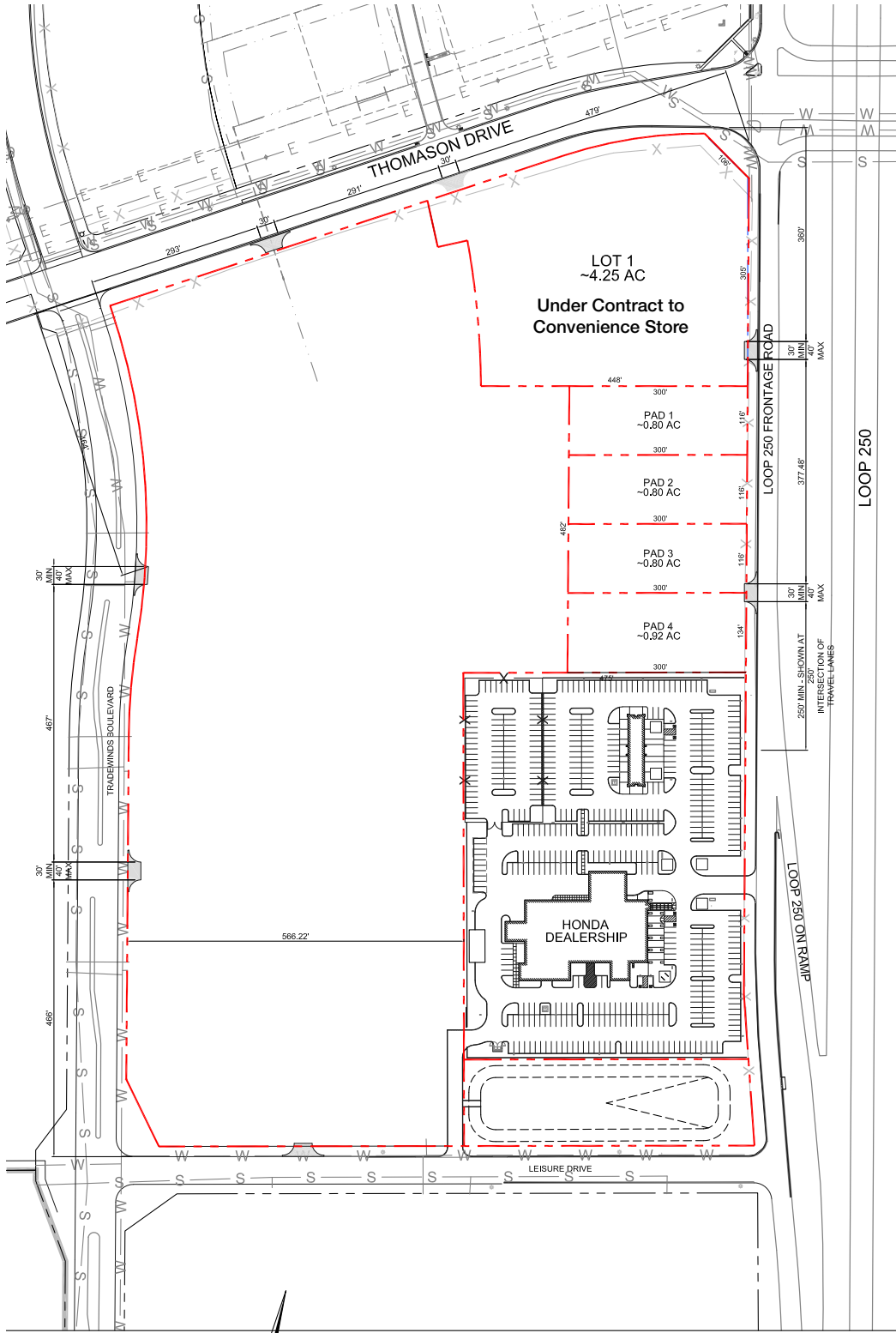


FOR MORE INFORMATION, PLEASE CONTACT:

**STEVE GREENBERG**  
 214.236.9501  
[sgreenberg@theretailconnection.net](mailto:sgreenberg@theretailconnection.net)

# WESTRIDGE VILLAGE—PAD SITES AVAILABLE FOR SALE, GROUND LEASE OR BTS

MIDLAND, TX | SWQ LOOP 250 AND THOMASON ROAD



Westridge Village



Access Overview



FOR MORE INFO, PLEASE CONTACT:  
**STEVE GREENBERG**  
 214.236.9501  
[sgreenberg@theretailconnection.net](mailto:sgreenberg@theretailconnection.net)

