

AMBASSADOR CAFFERY PARKWAY (RIGHT OF-W)

N51° 51' 01" W - 41.40'
 N51° 50' 48" W - 41.40'
 N46° 08' 10" W - 128.26'

POB 4 POB 2

POB 1 & 3

S46° 08' 10" E
 131.64'

New 10' Utility Easement

Access Road Easement
 Act No. 2005-55631

EXISTING 30' JOINT ACCESS EASEMENT

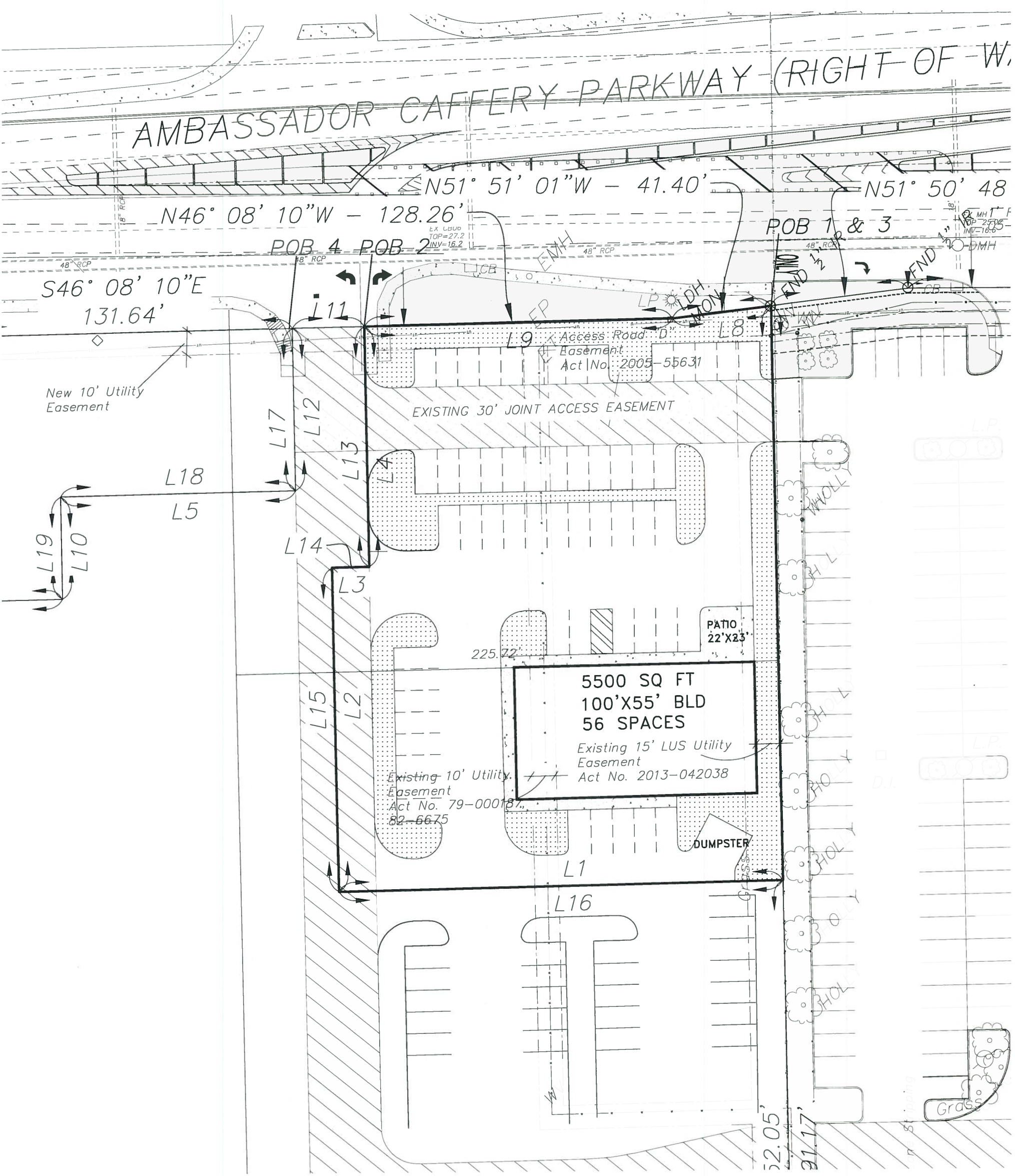
PATIO
 22'x23'

5500 SQ FT
 100'x55' BLD
 56 SPACES

Existing 10' Utility Easement
 Act No. 79-00018
 82-6675

Existing 15' LUS Utility Easement
 Act No. 2013-042038

DUMPSTER



5500sqft
 4721