

0 20' 40'

GRAPHIC SCALE: 1" = 40'

| PARKING TABULATION | |
|--------------------|-------|
| TRACT 1 | |
| REGULAR PARKING | = 299 |
| HANDICAP PARKING | = 8 |
| TOTAL PARKING | = 307 |
| TRACT 2 | |
| REGULAR PARKING | = 9 |
| HANDICAP PARKING | = 1 |
| TOTAL PARKING | = 10 |

PART OF LOT 1
BLOCK B/7480
OF THE
RESUBDIVISION OF THE PARTITION OF THE
JEFF AND HANNAH HILL ESTATE, REVISED
VOLUME 575, PAGE 2109
D.R.D.C.T.

BLOCK A/7480

18' UTILITY EASEMENT
VOL. 575, PG. 2109
LOT 1
BLOCK C/7480
NORTHWEST/FERNDALE
ADDITION
VOL. 86242, PG. 1223
D.R.D.C.T.

30' INGRESS & EGRESS EASEMENT
VOL. 316, PG. 565

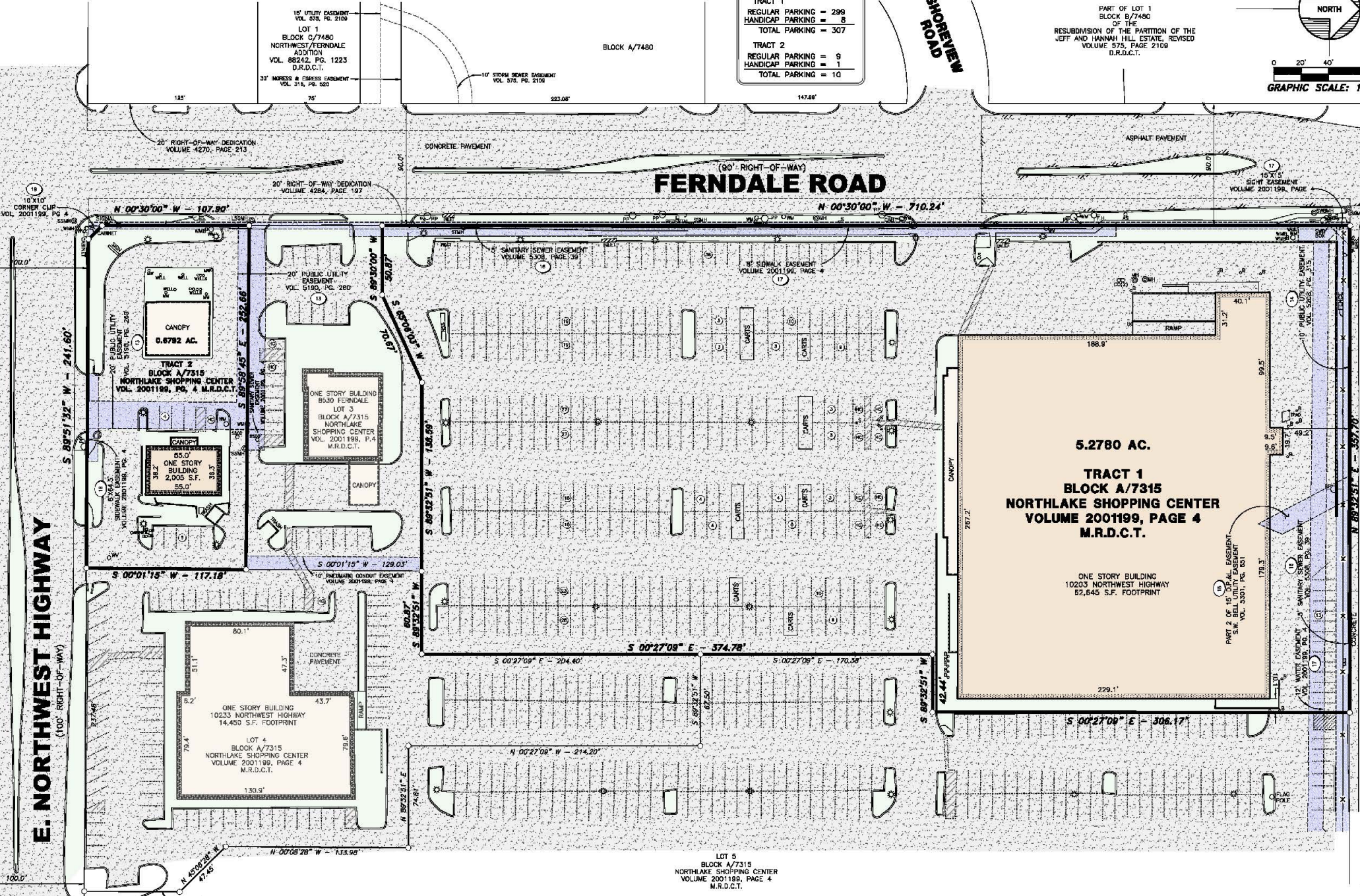
10' STORM SEWER EASEMENT
VOL. 375, PG. 2106

SHOREVIEW ROAD

FERNDALE ROAD

10' X 10' CORNER CLIP
VOL. 2001199, PG. 4

E. NORTHWEST HIGHWAY (100' RIGHT-OF-WAY)



N 00°30'00" W - 107.90'

N 00°30'00" W - 710.24'

15' X 15' SIGHT EASEMENT
VOLUME 2001198, PAGE 4

TRACT 2
BLOCK A/7315
NORTHLAKE SHOPPING CENTER
VOL. 2001199, PG. 4 M.R.D.C.T.

ONE STORY BUILDING
8530 FERNDALE
LOT 3
BLOCK A/7315
NORTHLAKE SHOPPING CENTER
VOL. 2001199, P. 4
M.R.D.C.T.

5.2780 AC.
TRACT 1
BLOCK A/7315
NORTHLAKE SHOPPING CENTER
VOLUME 2001199, PAGE 4
M.R.D.C.T.

ONE STORY BUILDING
10233 NORTHWEST HIGHWAY
62,645 S.F. FOOTPRINT

ONE STORY BUILDING
10233 NORTHWEST HIGHWAY
14,450 S.F. FOOTPRINT
LOT 4
BLOCK A/7315
NORTHLAKE SHOPPING CENTER
VOLUME 2001199, PAGE 4
M.R.D.C.T.

LOT 5
BLOCK A/7315
NORTHLAKE SHOPPING CENTER
VOLUME 2001199, PAGE 4
M.R.D.C.T.