

TARRANT REGIONAL WATER DISTRICT NOTES

1. THE SURFACE PARKING AND FIRE ENCROACHMENTS INTO THE EASEMENT ARE LIMITED TO FIFTEEN FEET.
2. NO TEMPORARY STAGING OR STORAGE OF CONSTRUCTION EQUIPMENT AND MATERIALS (INCLUDING BUT NOT LIMITED TO CONSTRUCTION MATERIALS, TALL STORAGE CONTAINERS OR OFFICE TRAILERS) IS ALLOWED ON TRAD'S EASEMENT.
3. TRAD HAS SACRIFICIAL ANODE BEDS IN THE AREA OF THE PROPOSED WORK. IN THE EVENT THE CONTRACTOR SEVERS ANY UNDERGROUND WIRING HE MUST LEAVE THE WIRES EXPOSED AND NOTIFY RISK CARROLL AT (817) 335-2491 AS SOON AS POSSIBLE.
4. THE SURFACE OF THE EASEMENT MUST BE RETURNED TO ITS ORIGINAL GRADE UNLESS ALTERED BY THE PLANS APPROVED HEREIN.
5. EQUIPMENT CROSSINGS OF OUR PIPELINE SYSTEM ARE PERMITTED AS CLOSE AS POSSIBLE TO 90 DEGREES, AND LIMITED TO 18,000 POUNDS PER AXLE. THE CONTRACTOR MUST FOLLOW THIS GUIDELINE DURING CONSTRUCTION TO PROTECT THE EXISTING WATER TRANSMISSION PIPELINE. THE CONSTRUCTION ENTRANCES THAT CROSS THE EASEMENT MAY NEED TO BE BUILT UP TO ACCOMMODATE LOADS EXCEEDING 18,000 POUNDS PER AXLE.

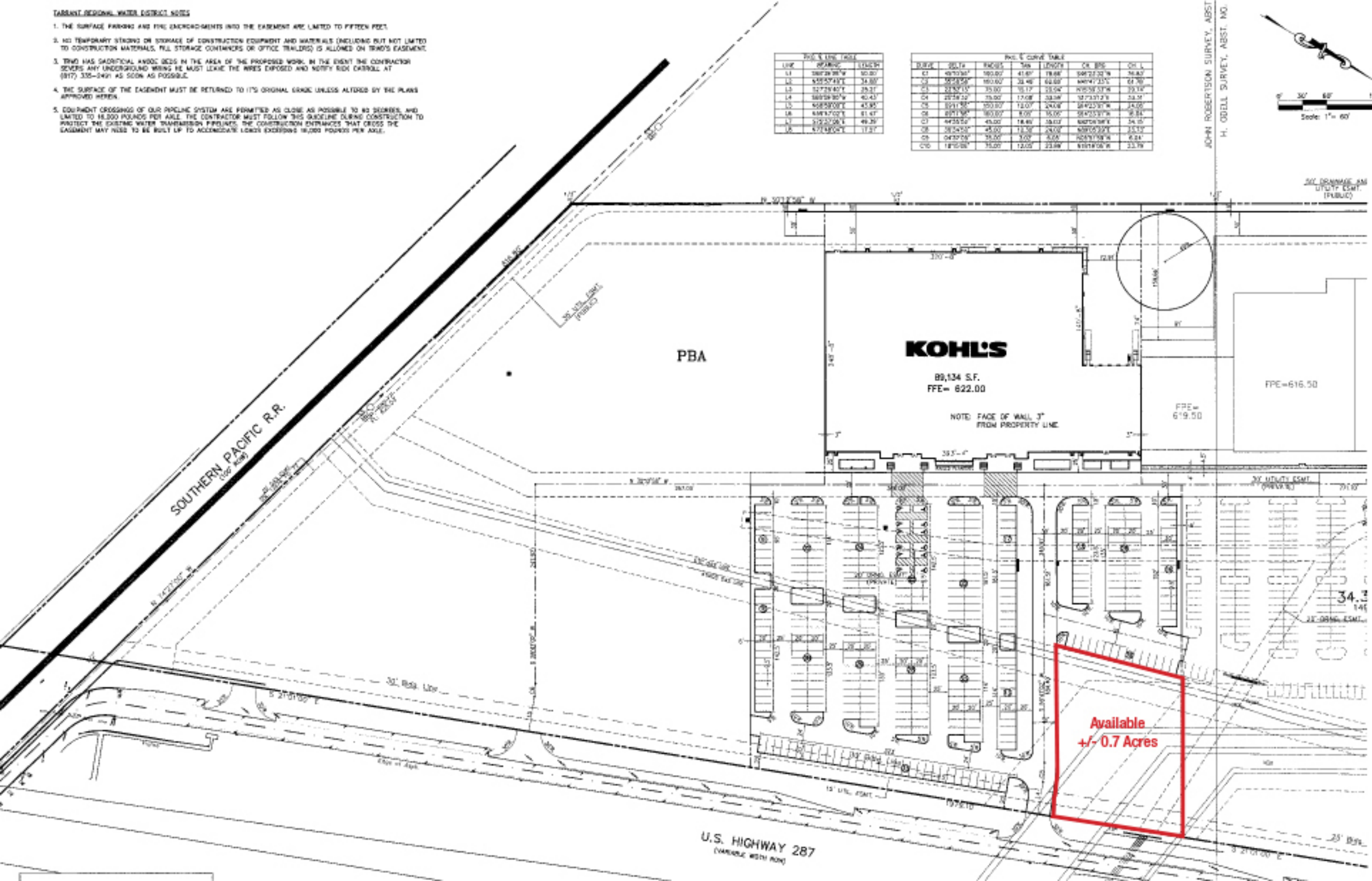
Prop. & Inv. Table

LINE	BEARING	LENGTH
L1	S89°28'30"W	50.00
L2	S45°52'31"E	34.00
L3	S27°28'42"E	25.31
L4	S89°28'30"W	40.43
L5	S88°52'03"E	45.95
L6	S89°17'02"E	51.47
L7	S75°27'28"E	49.29
L8	S71°43'02"E	17.57

Prop. & Curve Table

CHORD	DELTA	ARC	TA	PC	PT	PI	PE	CE	LC
C1	49°10'30"	180.00	41.87	18.88	106°22'32"W	36.82			
C2	58°28'58"	180.00	32.46	64.69	S69°47'23"E	61.70			
C3	28°52'15"	35.00	15.17	23.04	N10°38'37"W	25.18			
C4	28°58'52"	35.00	17.08	33.88	S77°31'27"E	33.34			
C5	32°11'58"	50.00	12.07	24.04	S84°23'37"W	34.00			
C6	39°11'30"	180.00	8.00	35.00	S84°23'37"W	36.84			
C7	44°25'52"	45.00	18.89	35.02	S89°28'30"W	34.05			
C8	38°24'52"	45.00	12.32	23.02	S89°28'30"W	35.32			
C9	04°32'03"	35.00	3.00	3.00	S28°17'58"W	6.84			
C10	18°10'00"	35.00	12.05	23.04	S89°28'30"W	33.78			

JOHN ROBERTSON SURVEY, ABST. NO. H. ODELL SURVEY, ABST. NO.



30' DR. ESMT. (PUBLIC)

FFE=616.50

FFE= 619.50

34.3
146
30' DR. ESMT. (PUBLIC)

U.S. HIGHWAY 287
(CHANGE WITH ROW)

Available
+/- 0.7 Acres